

PLC Splitter Datasheet

» Description

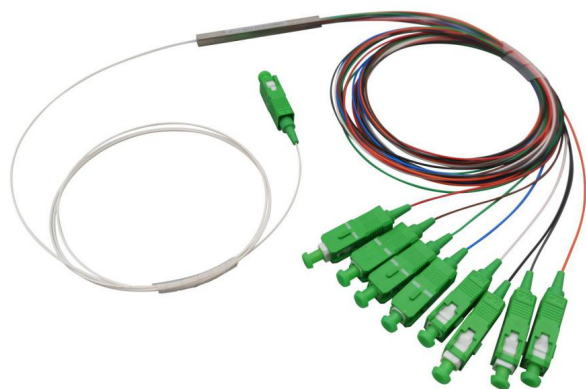
Planar lightwave circuit (PLC) splitter is a type of optical power management device that is fabricated using silica optical waveguide technology. It features small size, high reliability, wide operating wavelength range, and good channel-to-channel uniformity, and is widely used in PON networks to realize optical signal power splitting. Bwinners provides the whole series of 1xN and 2xN splitter products that are tailored for specific applications. All products meet GR-1209-CORE and GR-1221-CORE requirements.

» Features

- Low insertion loss and low PDL
- Various coupling ratio
- Environment stable
- Single mode and multimode available
- High Reliability and Stability
- High Channel counts
- Wide wavelength range
- Customized packaging and configuration

» Applications

- FTTx Construction
- Fiber Optical communication system
- Fiber Optical access networks
- Fiber Sensor
- Fiber CATV networks
- Local area networks



PLC Splitter Datasheet

Specifications

Table1-1XN PLC Splitter						
Parameters	1×2	1×4	1×8	1×16	1×32	1×64
Operating Wavelength (nm)	1260 ~ 1650					
Fiber Type	G657A or customer specified					
Insertion Loss (dB) (P/S Grade)	3.8/4.0	7.1/7.3	10.2/10.5	13.5/13.7	16.5/16.9	20.5/21.0
Loss Uniformity (dB)	0.4	0.6	0.8	1.2	1.5	2.0
Return Loss (dB)	55	55	55	55	55	55
Polarization Dependent Loss(dB)	0.2	0.2	0.2	0.25	0.3	0.35
Directivity (dB)	55	55	55	55	55	55
Wavelength Dependent Loss(dB)	0.3	0.3	0.3	0.5	0.5	0.5
Temperature Stability(-40~85 °C)(dB)	0.4	0.4	0.4	0.5	0.5	0.5
Operating Temperature (°C)	-40~85					
Storage Temperature (°C)	-40~85					
Device Dimension (mm) (L×W×H)	40×4×4	40×4×4	40×4×4	50×4×4	50×7×4	60×12×4
Module Dimension (mm) (L×W×H)	100×80×10	100×80×10	100×80×10	120×80×18	140×115×18	140×115×18
Mini-Module Dimension (mm) (L×W×H)	60×7×4	60×7×4	60×7×4	60×12×4	80×20×6	100x40x6

Note: All the data above does not include connectors, UPC connectors, IL add 0.2dB, APC connectors, IL add 0.3dB.

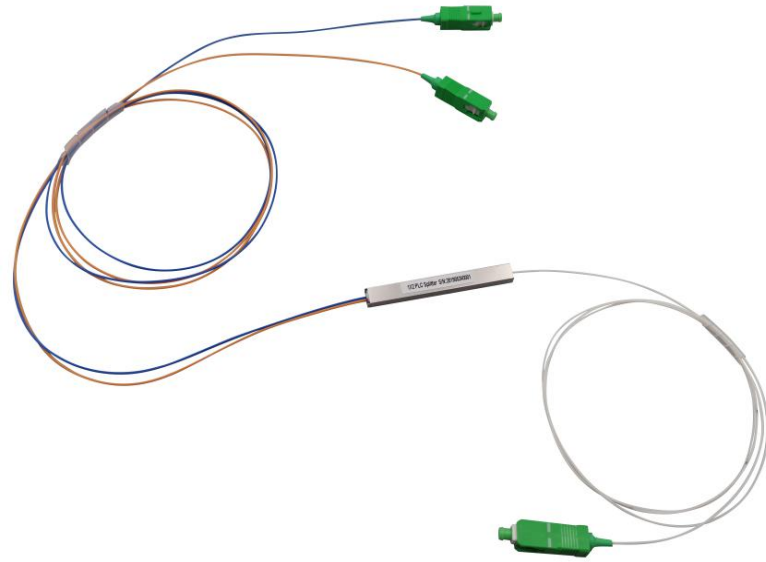
PLC Splitter Datasheet

Specifications

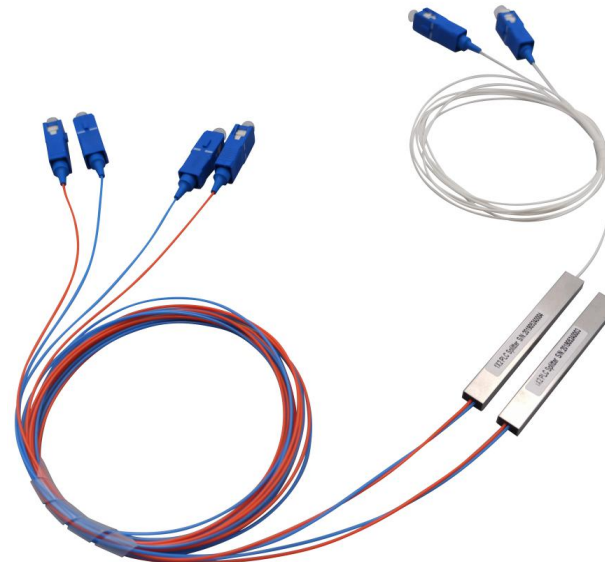
Table2-2XN PLC Splitter						
Parameters	2×2	2×4	2×8	2×16	2×32	2×64
Operating Wavelength (nm)	1260 ~ 1650					
Fiber Type	G657A or customer specified					
Insertion Loss (dB)	4.0	7.6	11.0	14.4	17.5	21.0
Loss Uniformity (dB)	0.6	1.0	1.2	1.5	1.8	2.2
Return Loss (dB)	55	55	55	55	55	55
Polarization Dependent Loss(dB)	0.2	0.2	0.3	0.3	0.4	0.4
Directivity (dB)	55	55	55	55	55	55
Wavelength Dependent Loss(dB)	0.3	0.4	0.5	0.5	0.5	0.5
Temperature Stability(-40~85 °C)(dB)	0.4	0.4	0.4	0.5	0.5	0.5
Operating Temperature (°C)	-40~85					
Storage Temperature (°C)	-40~85					
Device Dimension (mm) (L×W×H)	40×4×4	50×4×4	50×4×4	50×7×4	60×7×4	60×12×4
Module Dimension (mm) (L×W×H)	100×80×10	100×80×10	100×80×10	120×80×18	120×80×18	140×115×18
Mini-Module Dimension (mm) (L×W×H)	60×7×4	60×7×4	60×7×4	60×12×4	80×20×6	N/A

Note: All the data above does not include connectors, UPC connectors, IL add 0.2dB, APC connectors, IL add 0.3dB.

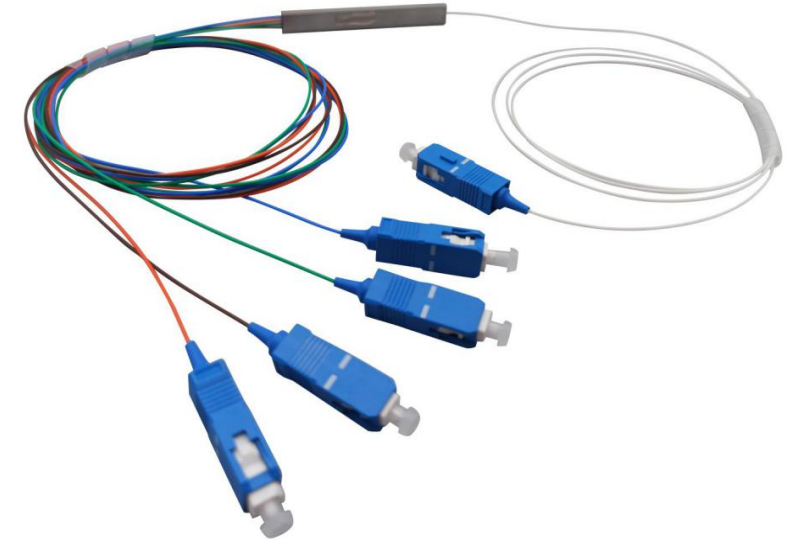
Steel Tube PLC Splitter Datasheet



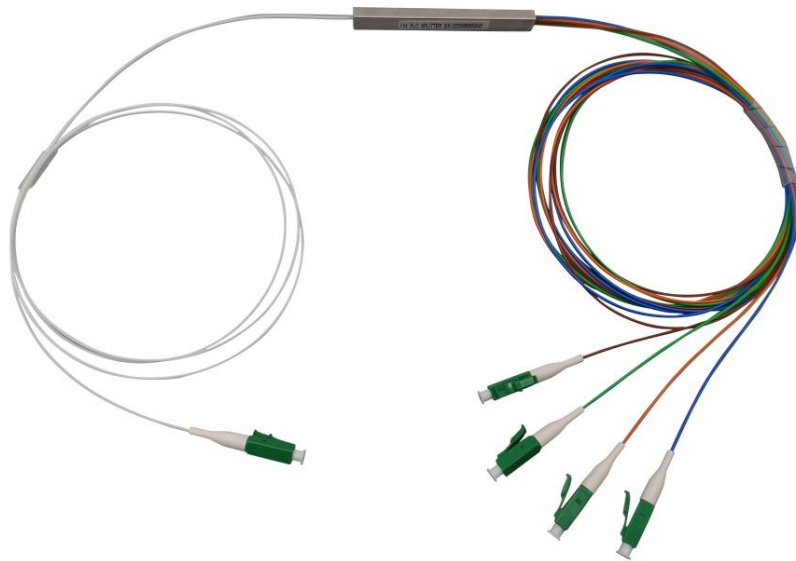
BWN-PLC-MMST-1X2-SC-APC



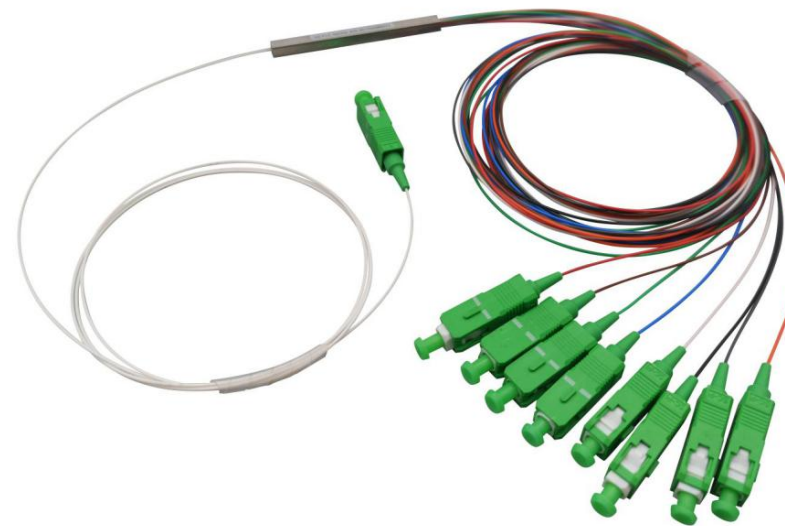
BWN-PLC-MMST-1X2-SC-UPC



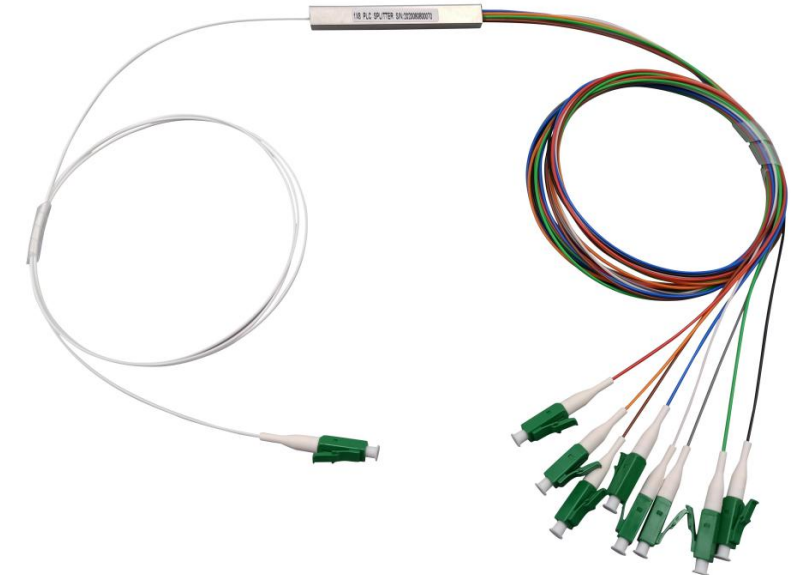
BWN-PLC-MMST-1X4-SC-UPC



BWN-PLC-MMST-1X4-LC-APC

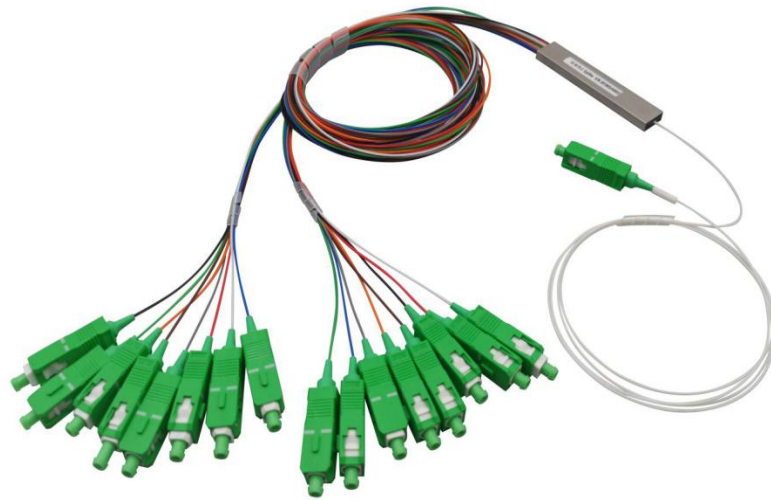


BWN-PLC-MMST-1X8-SC-APC

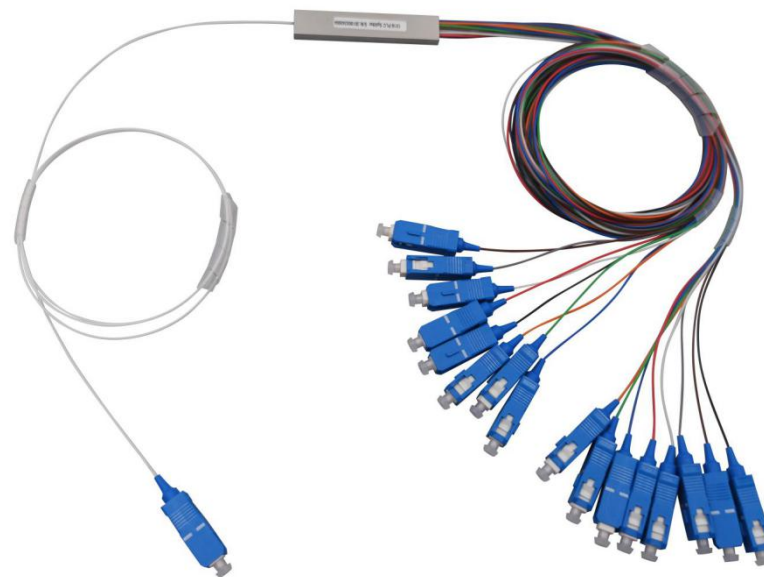


BWN-PLC-MMST-1X8-LC-APC

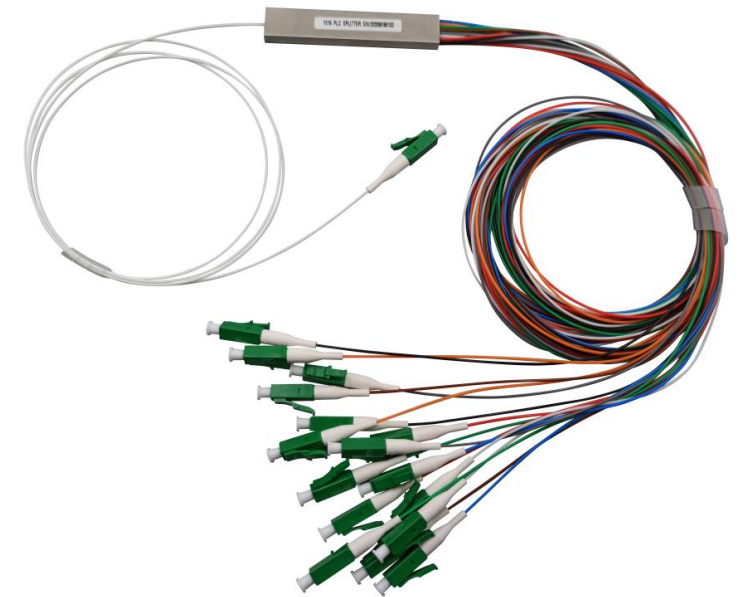
Steel Tube PLC Splitter Datasheet



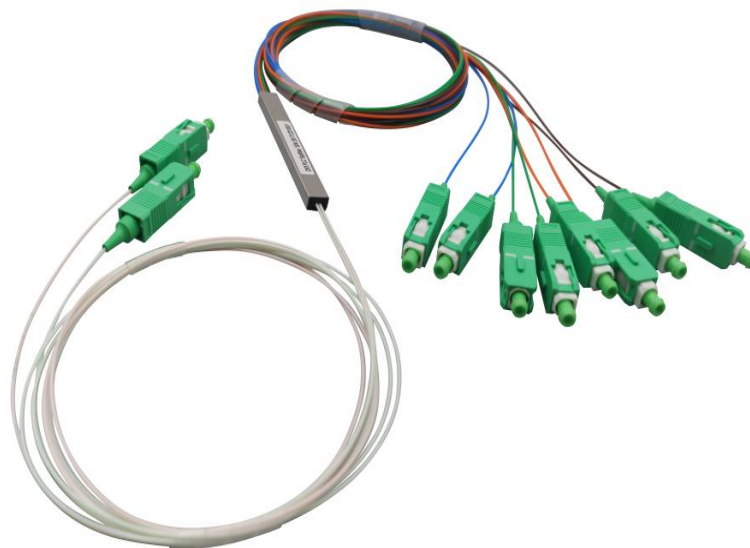
BWN-PLC-IM-1X16-SC-APC



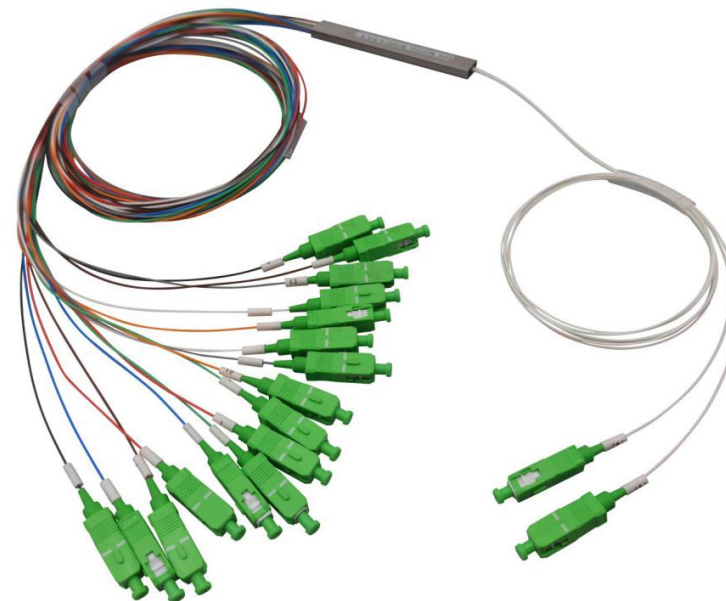
BWN-PLC-IM-1X16-SC-UPC



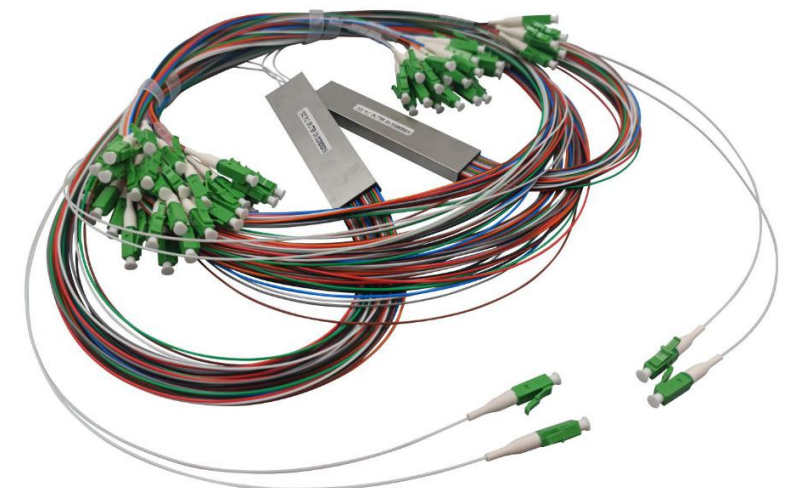
BWN-PLC-MMST-1X16-LC-APC



BWN-PLC-MMST-2X8-SC-APC



BWN-PLC-MMST-2X16-SC-APC



BWN-PLC-MMST-2X32-LC-APC

Cassette Type PLC Splitter Datasheet



BWN-PLC-CT-1X2-SC-UPC-2.0



BWN-PLC-CT-1X4-SC-APC



BWN-PLC-CT-1X4-SC-UPC-2.0



BWN-PLC-CT-1X8-SC-APC-0.9



BWN-PLC-CT-1X8-SC-APC-2.0



BWN-PLC-CT-1X8-SC-UPC-2.0



BWN-PLC-CT-1X16-SC-APC-2.0



BWN-PLC-CT-1X16-SC-UPC-2.0



BWN-PLC-CT-1X32-LC-APC-2.0

Cassette Type PLC Splitter Datasheet



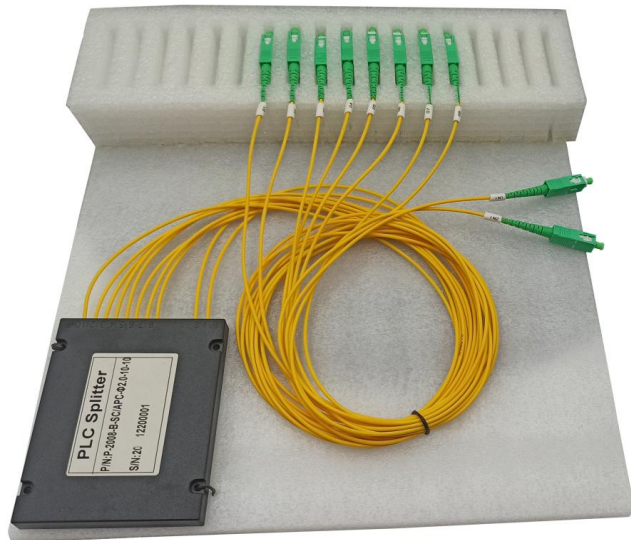
BWN-PLC-CT-1X32-SC-APC-2.0



BWN-PLC-CT-1X64-APC



BWN-PLC-CT-2X4-SC-APC-2.0



BWN-PLC-CT-2X8-SC-APC-2.0

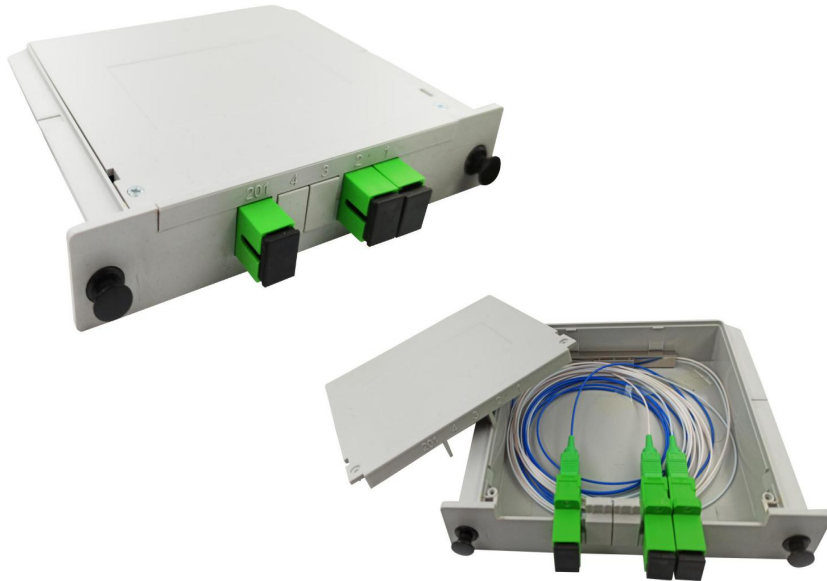


BWN-PLC-CT-2X32-SC-APC-2.0

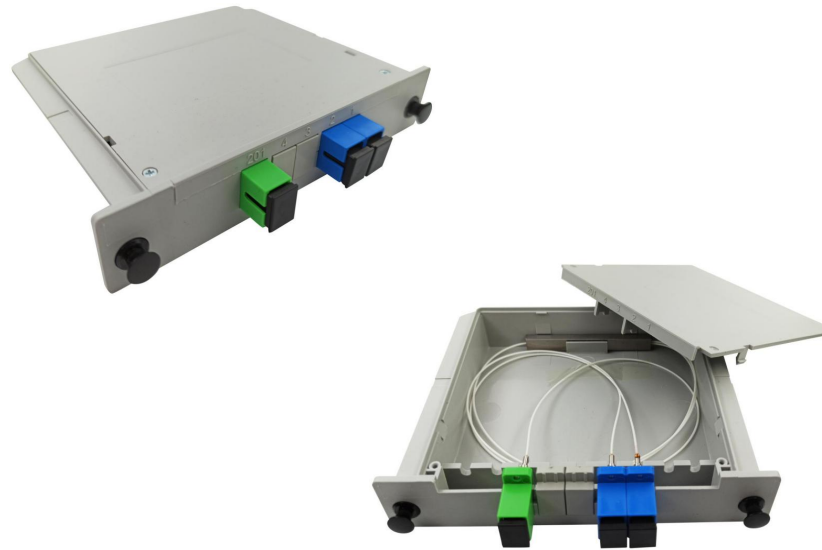


BWN-PLC-CT-2X64-SC-APC-2.0

Insertion Module PLC Splitter Datasheet



BWN-PLC-IM-1X2-SC-APC



BWN-PLC-IM-1X2-SC-UPC



BWN-PLC-IM-1X4-SC-APC



BWN-PLC-IM-1X4-SC-UPC



BWN-PLC-IM-1X8-SC-APC



BWN-PLC-IM-1X8-SC-UPC

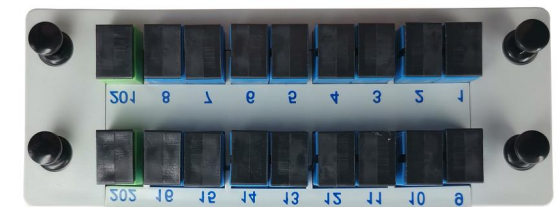
Insertion Module PLC Splitter Datasheet



BWN-PLC-IM-1X16-SC-APC

BWN-PLC-IM-1X16-SC-UPC

BWN-PLC-IM-1X32-SC-UPC



BWN-PLC-IM-2X4-SC-UPC

BWN-PLC-IM-2X8-SC-UPC

BWN-PLC-IM-2X16-SC-UPC

Rack Mounted PLC Splitter Datasheet



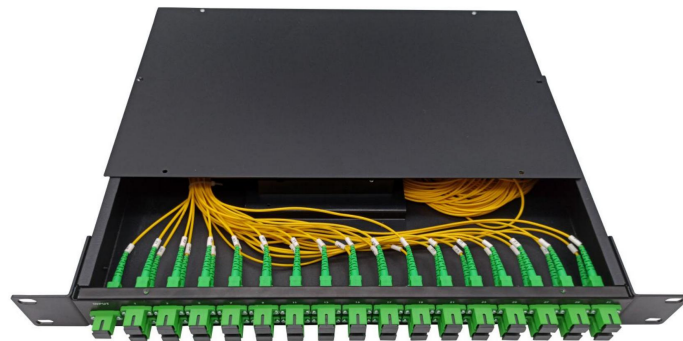
BWN-PLC-RM



BWN-PLC-RM-1X16



BWN-PLC-RM-1X32



BWN-PLC-RM-1X64

