

## FTTx Installations Datasheet

### » Description

Bwinners provide the best quality anchoring clamps for optical fiber cable suspension in the construction of aerial fiber infrastructure. Anchoring, drop wire clamp for FTTH network - wedge tension cable clamp is suitable for cables with the diameter from 2 - 7 mm of the following wedge types: for self-supporting aerial cable; for ADSS cables; for fiber optic cable; for ethernet cable; for network cables; for round aerial cable; for oval or flat cable; for electrical cable; for telecom cables; for FTTH cables.

This cable clamp provides you an ability to fasten the cable, without exposing the cable or separating supporting elements. The installation does not require boring or separation of the supporting cable and does not cause any damage to the sheath.

This clamp has several names: wedge type tension clamp for cable suspension, wire clamp, dead-end cable clamp, wedge fastening clamp, cable tensioner, fiberoptic clamp, wire cable clamp, wedge clamp anchor clamp and similar.

With the use of this cable clamp, it is possible to fasten three main types of cables: round cable, oval or flat cables. Wedge clamp consists of a plastic frost and UV resistant body, polymeric wedge, and loop made of a galvanized steel. It allows an easy, fast, and reliable manual installation without any tools for building overhead communication lines on utility poles. It fastens by a loop to the utility poles with the help of hooks, brackets, etc.

A distinctive feature of our cable clamps is that under extreme conditions (frosting, trees falling, hurricanes, etc.) the cable clamp is destroyed without the damage to the cable which, in some cases, prevents line breakage.

Our tension wedge clamps are made of high-quality materials and are able to operate under extreme conditions and loads. It designed for a fast mounting of self-supporting fiberoptic and other cables on the utility poles.

Outdoor drop wire clamp used in FTTH network constructions. Designed to fiber drop cable to the side of a subscriber's house by either accepting the bail of drop wire clamps or by wrapping the support wire of drop cable around the screw eye. As well drop wire clamp is used to support both ends of an aerial service drop span at the messenger strand and building.

## FTTx Installations Datasheet



**FACH-BW-01**



**FACH-BW-01-A**



**FACH-BW-12**



**FACH-BW-12-A**



**FACH-BW-16**



**FACH-BW-17**



**FACH-BW-13**



**FACH-BW-14**



**FACH-BW-15**



**FACH-BW-04**



**FACH-BW-04-A**



**FACH-BW-07**



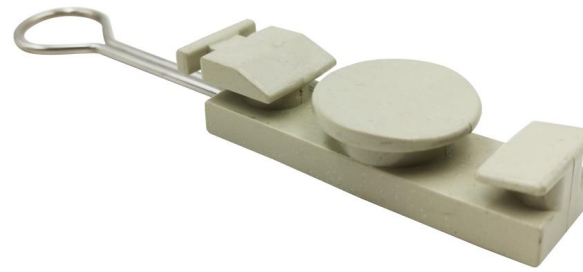
**FTTx Installations Datasheet**



**FACH-BW-03-A**



**FACH-BW-03-B**



**FACH-BW-03-C**



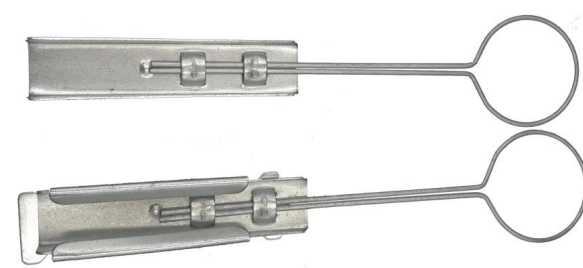
**FACH-BW-10-A**



**FACH-BW-10-B**



**FACH-BW-10-C**



**FACH-BW-10-D**



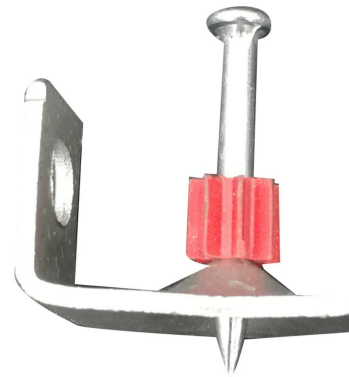
**FACH-BW-10-E**



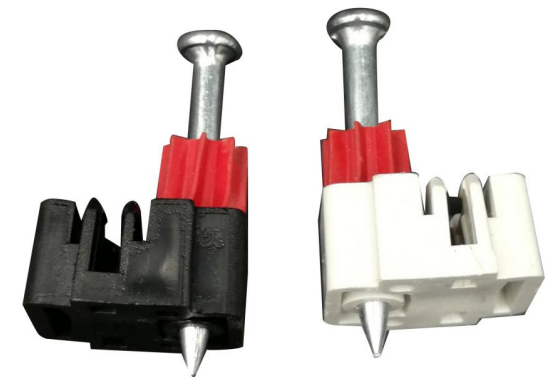
**FACH-BW-11-A**



**FACH-BW-11-B**



**FACH-BW-02**

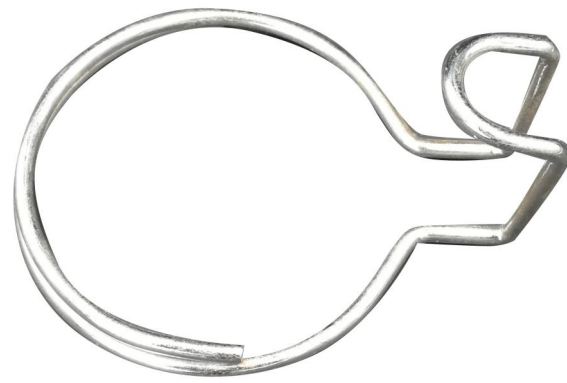


**FACH-BW-02-A**

## FTTx Installations Datasheet



**FACH-BW-05**



**FACH-BW-06**



**FACH-BW-08**



**FACH-BW-09**



**FACH-BW-11-C**