

Fiber Optic Fast Connector Datasheet

» Description

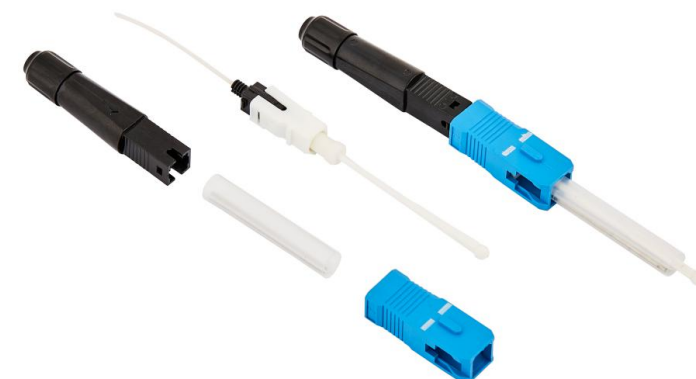
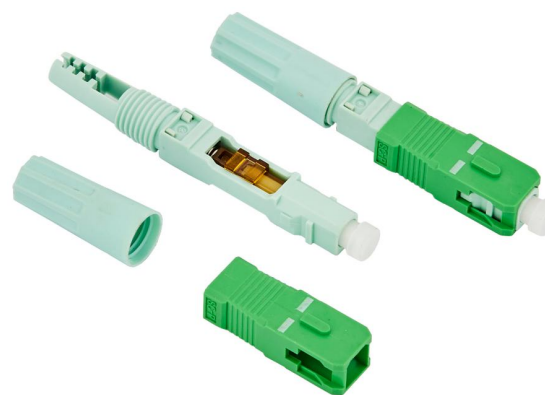
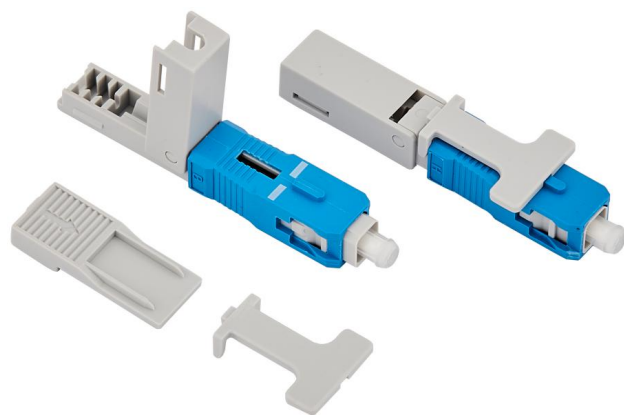
Bwinners Fiber Optic Fast Connector are factory pre-polished, field-installable connectors that eliminate the need for hand polishing in the field. Proven mechanical splice technology ensuring precision fiber alignment, a factory pre-cleaved fiber stub, and a proprietary index-matching gel combine to offer an immediate low loss termination to either single-mode or multimode optical fibers.

» Features

- Quick, easy, and clean solution for fiber terminating connectors.
- Precision mechanical alignment ensures low insertion loss.
- It can be installed within two minutes, including preparation time.
- High success rate of connection, Superior optical performance.
- Simple assembly process, convenient operation.
- No epoxy and polishing required, reducing installation time.
- Stable optical performance is achieved through its use of V-groove mechanical splice technology.

» Applications

- Fiber optic communication system and telecommunication networks
- Fiber optic data transmission
- CATV
- Patch Panels
- Optical access network
- Fibre to the Subscriber (FTTx) applications
- Optical cable interconnection
- Maintenance or emergency restoration of fiber networks
- Field Repair/Replacement
- Fiber optic equipment
- FTTx Applications



Fiber Optic Fast Connector Datasheet

» Specifications

Item	Parameter
Name	Fiber Optic Fast Connector
Connector Type	SC/ LC/ FC
Polishing	APC / UPC
Fiber Mode	9/125 μ m Singlemode
Cable Diameters	0.9/2.0/3.0mm
Ferrule	Ceramic
Coating Diameter	250 & 900 μ m
Operation Time	about 15s (exclude fiber presetting)
Insertion Loss	≤ 0.3 dB (1310nm & 1550nm)
Return Loss	≤ -45 dB for UPC, ≤ 50 dB for APC
Reusable Times	>5 times
Tension Test	≥ 100 N
Operating Temperature	-40 $^{\circ}$ C~+85 $^{\circ}$ C
On-line Tensile Strength Test (20 N)	IL ≤ 0.3 dB
Mechanical Durability (500 times)	IL ≤ 0.3 dB
Drop Test (4m concrete floor, once each direction, three times total)	IL ≤ 0.3 dB
Remark: Ferrule Concentricity SM< 1 μ m; MM< 1.4 μ m Ferrule inner diameter tolerance +1/-0 μ m Ferrule outer diameter tolerance +/-0.5 μ m	

Fiber Optic Fast Connector Datasheet



MBN-FOFC-A53-APC



MBN-FOFC-A53-UPC



MBN-ESC250D-APC



MBN-ESC250D-UPC



MBN-FOFC-B55-APC



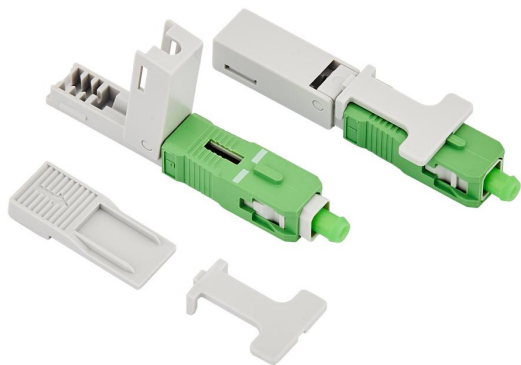
MBN-FOFC-B55-UPC



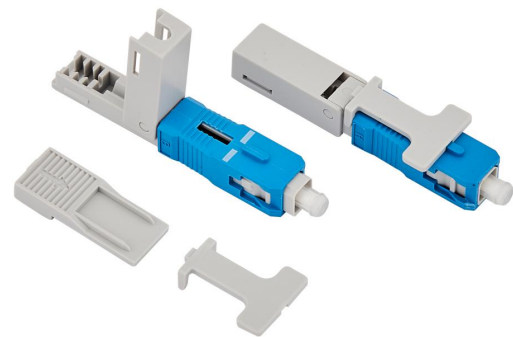
MBN-FOFC-C60-APC



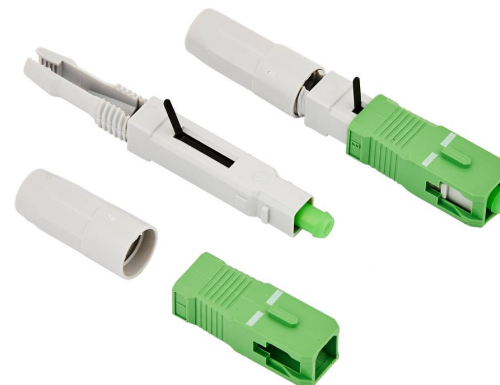
MBN-FOFC-C60-UPC



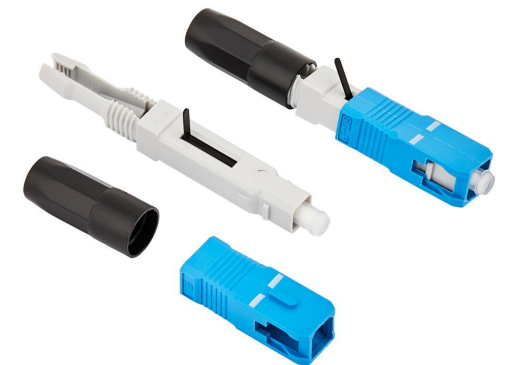
MBN-FOFC-D-APC



MBN-FOFC-D-UPC



MBN-FOFC-E-APC

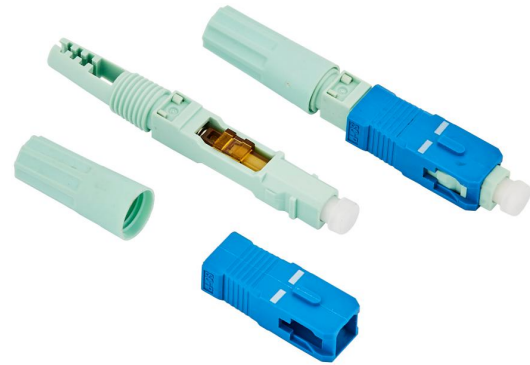


MBN-FOFC-E-UPC

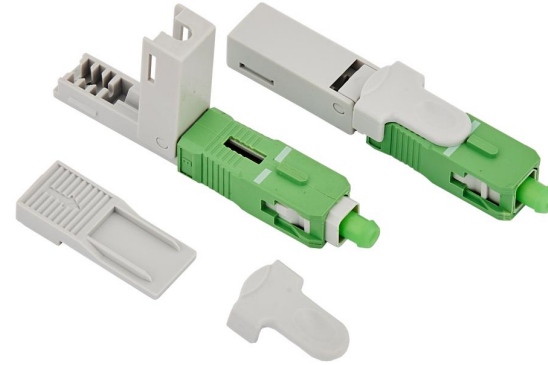
Fiber Optic Fast Connector Datasheet



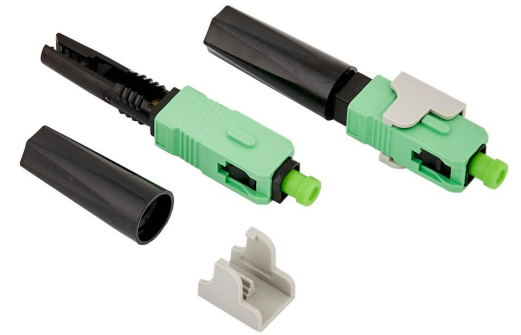
MBN-FOFC-G58-APC



MBN-FOFC-G58-UPC



MBN-FOFC-F-APC



MBN-FOFC-H-APC



MBN-FOFC-I53-APC



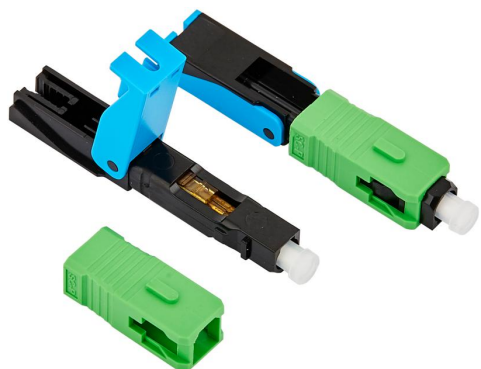
MBN-FOFC-I53-UPC



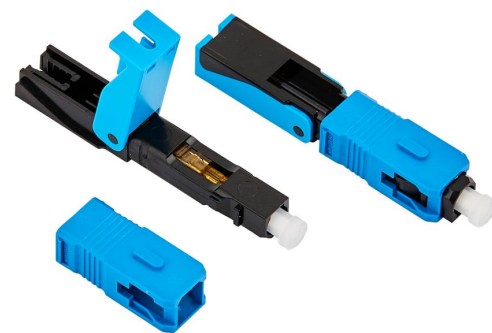
MBN-FOFC-J50-APC



MBN-FOFC-J50-UPC



MBN-FOFC-K-APC



MBN-FOFC-K-UPC



MBN-FOFC-FC1-APC

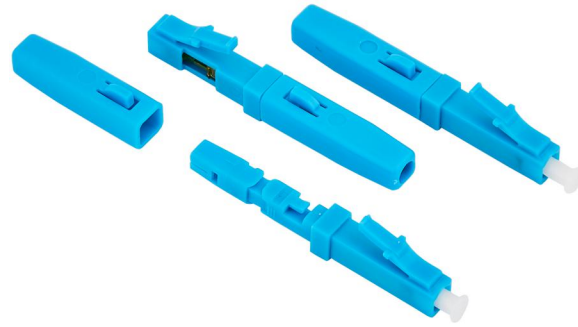


MBN-FOFC-FC2-APC

Fiber Optic Fast Connector Datasheet



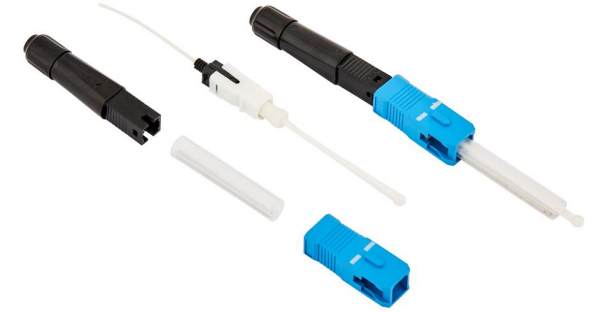
MBN-FOFC-LC1-APC



MBN-FOFC-LC1-UPC



MBN-FOHM-APC



MBN-FOHM-UPC