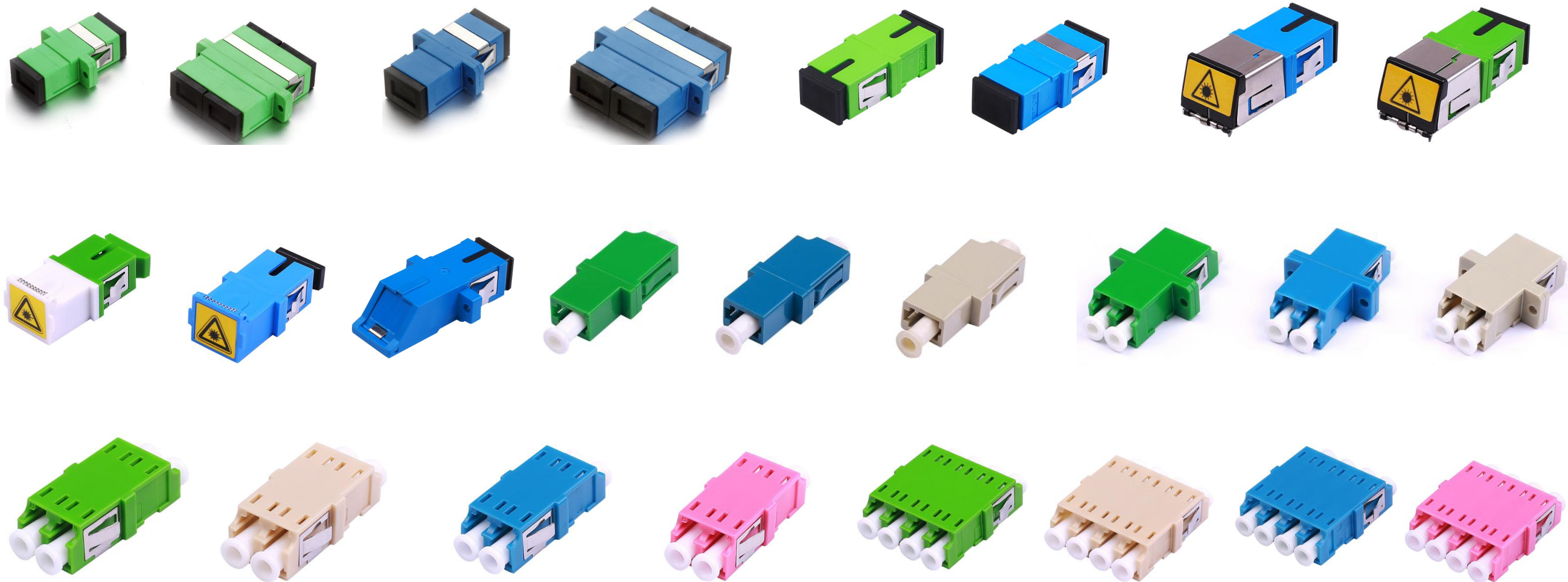


Fiber Optic Adapters Datasheet

» Description

Bwinners Fiber Optic Adapter is part of passive components for FTTH ODN connectivity, it is used to join two fiber optic patch cables together for realizing the transition between different interfaces and they are available for use with either single mode or multimode fiber optic patch cord. Fiber Optic Adapter can offer superior low loss performance with very high repeatability.

Bwinners offers different types of fiber adaptors comply with ITU standard, main products including Fiber Mating Sleeve Adaptor, Fiber Hybrid Adaptor, Fiber Bare Fiber Adaptor, Fiber Mechanical Attenuator, Field Assembly Optical Connector (FAOC), Splice-On Connector, Semi-finished Fiber Connector, etc.



Fiber Optic Adapters Datasheet

» Specifications

Fiber Optic Adapter/ Fiber Optic Flange/ Fiber Adaptor					
Interface Type	SC, FC, ST, LC, MU, ST				
End-face	APC/UPC/PC				
Mode	Singlemode & Multimode				
Fiber mode	Simplex, Duplex, Quad				
Sleeve	Zirconia, Ceramic, Phosphor bronze				
Frame Material	Plastic (LSZH)				
Color	Blue, Green, Beige, Aqua				
Flange type	With/without Flange				
Shutter type	With/without Shutter				
Adaptor Type	LC			SC	
	Simplex	Duplex	Quad	Simplex	Duplex
Housing Material	Polybutylene Terephthalate				
Sleeve Material	Zirconia	Phosphor Bronze	Zirconia	Zirconia	Phosphor Bronze
Insertion Loss (dB)	≤0.2	≤0.3	≤0.2	≤0.2	≤0.3
Sleeve/Ferrule Withdraw Force	200gf – 600gf				
Operating Temperature	-40°C ~ +75°C				
Storage Temperature	-45°C~85°C				
Durability	>1000				

Fiber Optic Adapters Datasheet

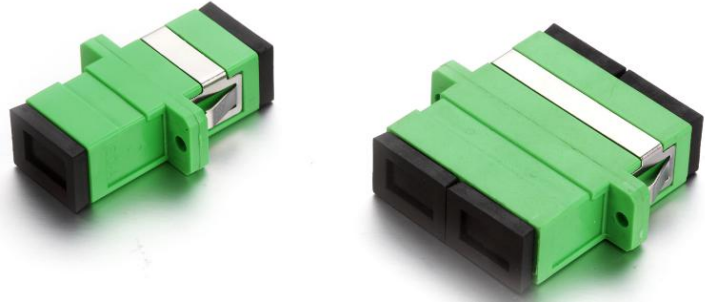
»» Features

- Compliant with: IEC, JIS, Telcordia
- Convenience and ease of handling
- Optical performance 100% factory tested
- Flange or threaded mounting type
- Ceramic/Zirconia or phosphorous bronze sleeves
- Good changeability and repeatability
- Compatible with fiber panels
- Low insertion and return loss and back reflection
- High precision alignment and High precision sleeve
- Compact design
- High reliability and stability
- Fast and easy connection
- Lightweight and durable plastic body
- Color coded for rapid fiber mode identification, reduction of errors and mode mismatch

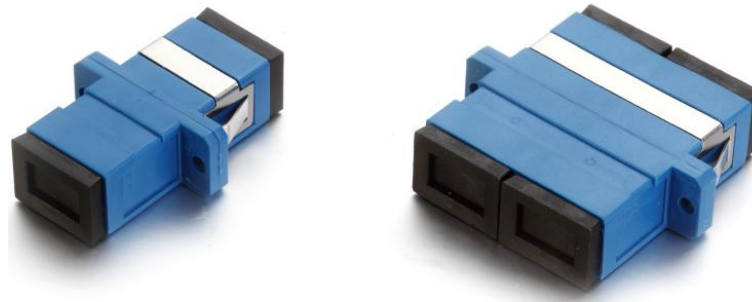
»» Applications

- Telecommunication networks
- FTTX, FTTH
- LAN, WAN, CATV networks
- Active device termination/Transceiver interface
- Gigabit ethernet
- Fiber communications, Data communication networks and processing, Industrial, Mechanical and Military.

SC Fiber Optic Adapters Datasheet



**SC APC SX DX SM Green Fiber Adapter
w/ Flange**



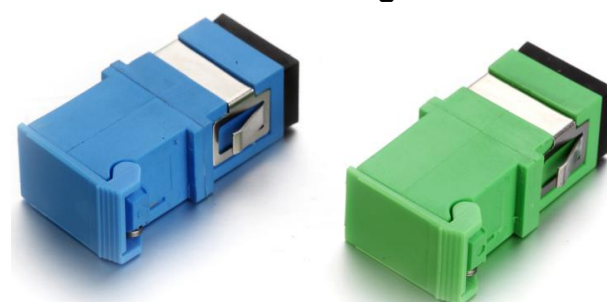
**SC UPC SX DX SM Blue Fiber Adapter
w/ Flange**



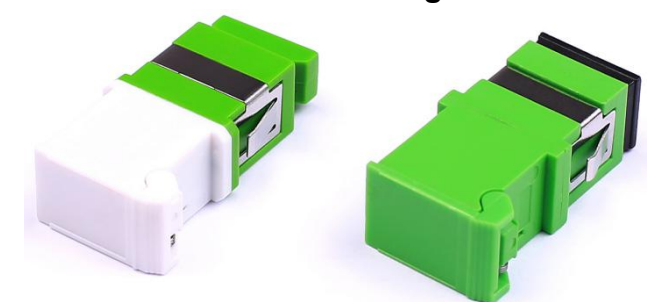
**SC APC SX DX MM Beige Fiber Adapter
w/ Flange**



**SC APC/UPC/PC SX SM Fiber Adapter
w/o Flange**



**SC APC/UPC/PC SX SM Fiber Adapter
with right Side Outer Shutter w/o Flange**



**SC APC SX SM Fiber Adapter
with right Side Outer Shutter w/o Flange**



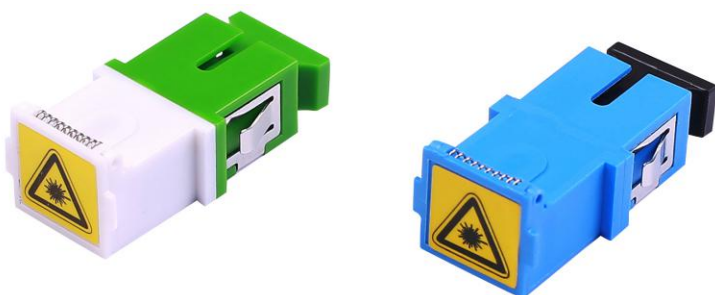
**SC UPC SX SM Blue Fiber Adapter
with Inside Leaning Shutter w/ Flange**



**SC SX SM Fiber Adapter
with Removable Outer Shutter w/o Flange**



**SC SX SM Fiber Adapter
with Removable Outer Shutter w/ Flange**



**SC SX SM Fiber Adapter
with Up Side Outer Shutter w/o Flange**

LC Fiber Optic Adapters Datasheet



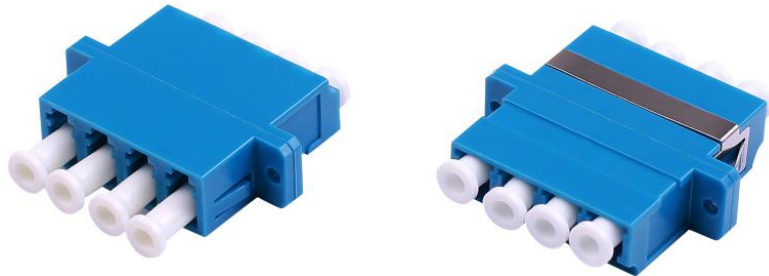
**LC SX Fiber Adapter Assembly Type
w/o Flange**



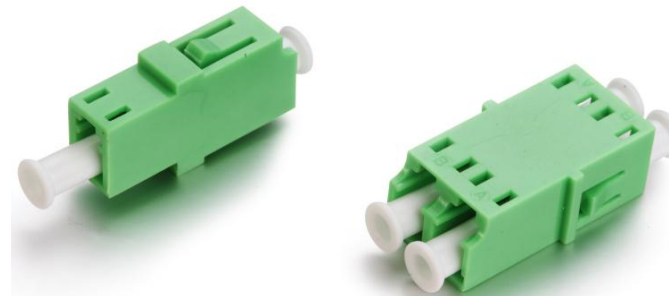
**LC DX Symmetrical Fiber Adapter Assembly Type
w/ Flange**



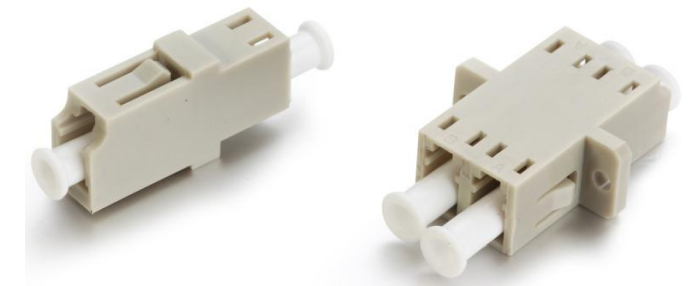
**LC DX Fiber Adapter Assembly Type
w/ Flange**



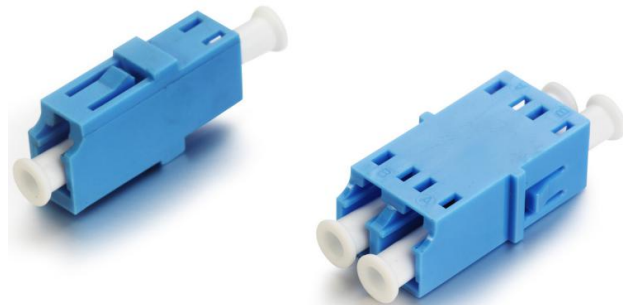
**LC UPC Quad Blue Fiber Adapter Assembly Type
w/ Flange**



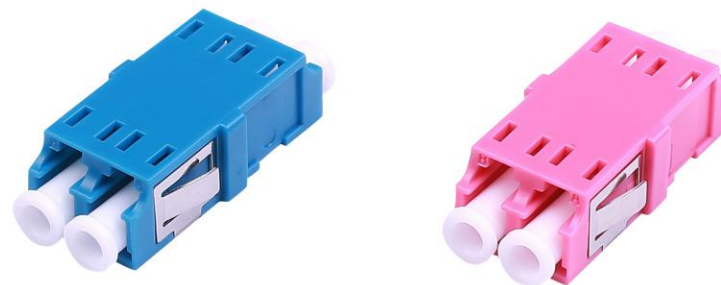
**LC APC SX DX Green Fiber Adapter Screw Type
w/o Flange**



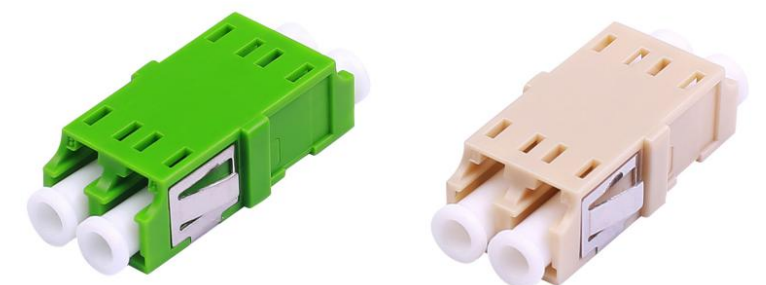
**LC UPC SX DX Beige Fiber Adapter
Screw Type**



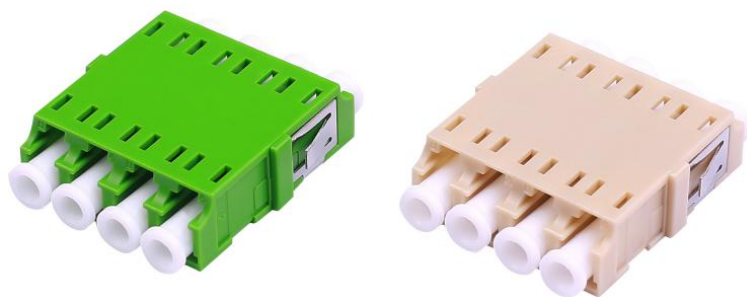
**LC UPC SX DX Blue Fiber Adapter Screw Type
w/o Flange**



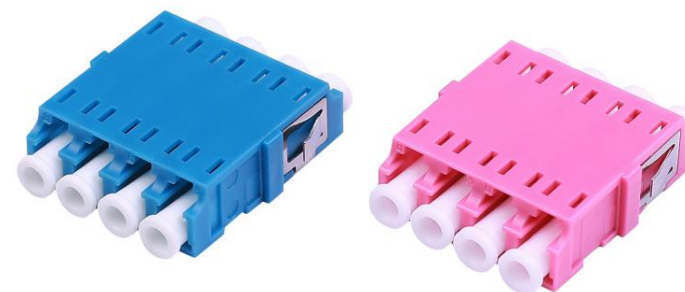
**LC DX Fiber Adapter Screw Type
w/o Flange**



**LC DX Fiber Adapter Screw Type
w/o Flange**



**LC Quad Fiber Adapter Screw Type
w/o Flange**



**LC Quad Fiber Adapter Screw Type
w/o Flange**