

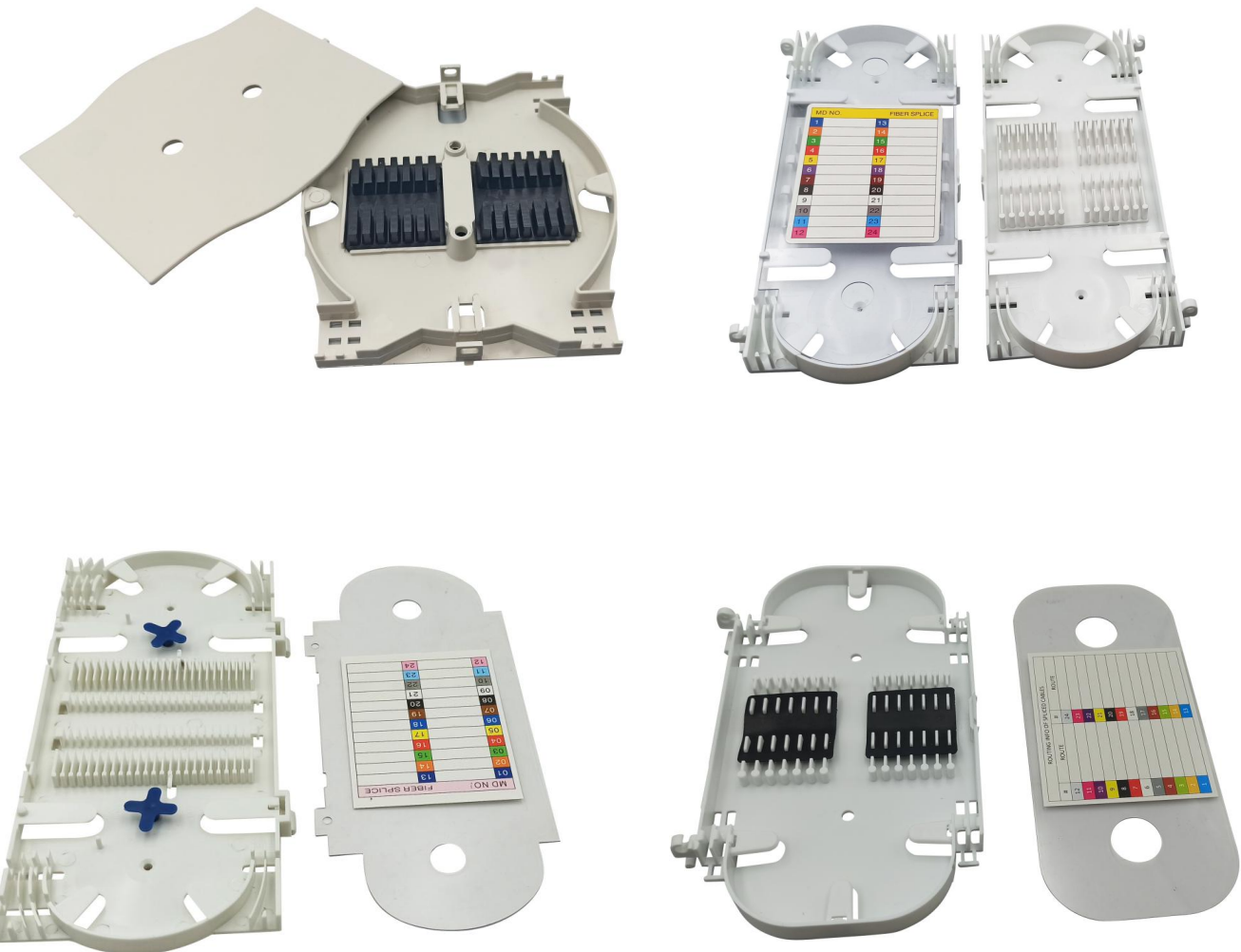
## Fiber Splice Tray Datasheet

### » Description

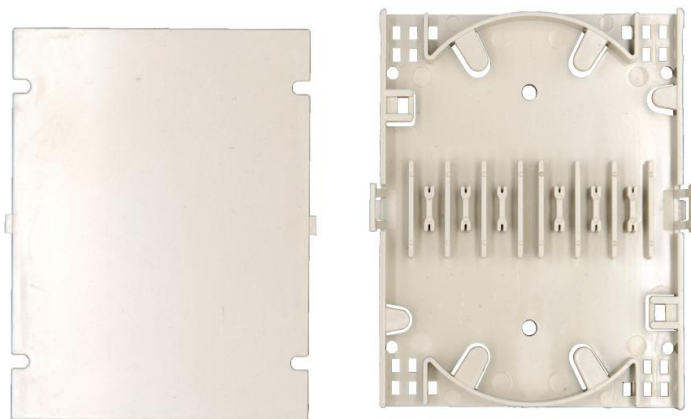
Made by industrial high quality ABS plastic, fiber splice tray is provided to place the fiber splice points and pre-terminated for fiber connectivity. The splice tray expands fiber splice capabilities as well as provides the splicing location for fiber optic cables. It can be put into the fiber distribution frame, fiber splice closure, optic terminal box, etc. Bwinners offers different shapes of fiber splice tray with or without termination function.

### » Features

- ABS material used ensures the body strong and light
- The fusing distribution board of the unit box is double-layer structure, integrating the fusing and distribution into one unity
- Fiber high-density splice trays
- Protect and manage heat shrink style spliced fibers
- Heat shrink splice holder and sleeves included
- Clear cover allows viewing or inspection of fibers without having to remove the cover
- Use for single-mode or multimode fiber
- Durable injection-molded plastic trays and covers
- Longer bending radius for fiber, Easy operation of pigtails
- Easily disposed of particular needs
- Suitable for ribbon or non-ribbon optical fiber cable



## Fiber Splice Tray Datasheet



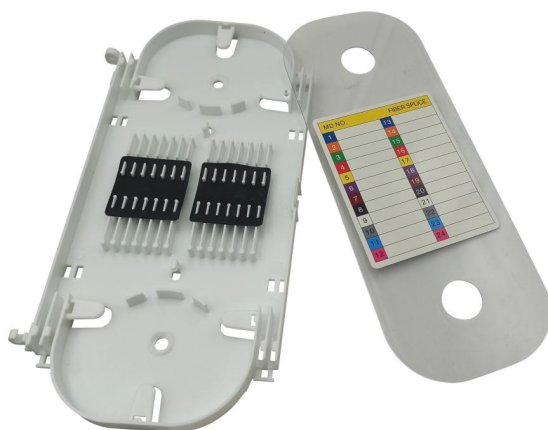
Model	SJ-BWN-FST-01
Capacity	12 Cores
Pitch of Holes	60mm
Size	100X80X12mm



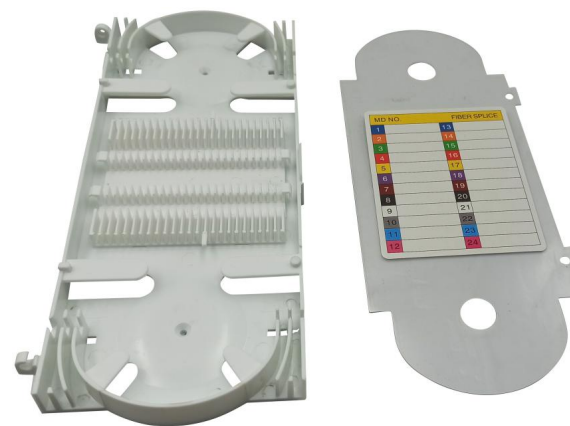
Model	SJ-BWN-FST-02
Capacity	24 Cores
Pitch of Holes	172mm
Size	245X117X12mm



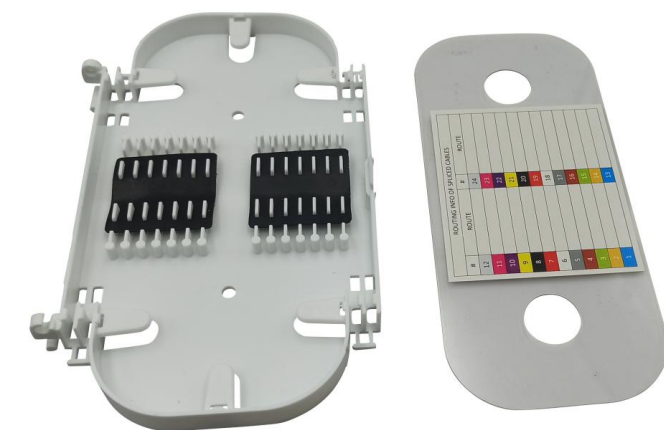
Model	SJ-BWN-FST-03
Capacity	24 Cores
Pitch of Holes	150mm
Size	225X117X17mm



Model	SJ-BWN-FST-04
Capacity	24 Cores
Pitch of Holes	150mm
Size	225X117X17mm

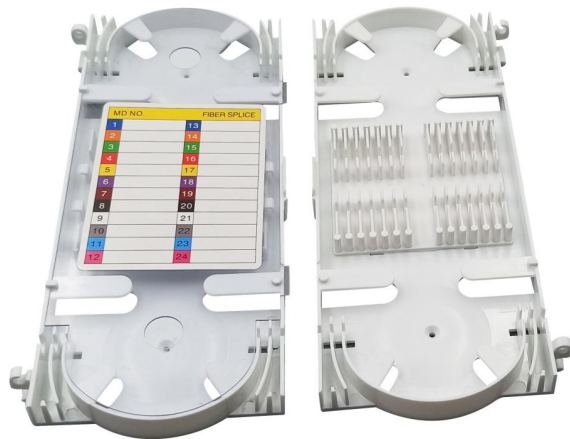


Model	SJ-BWN-FST-05
Capacity	24 Cores
Pitch of Holes	148mm
Size	218X98X20mm

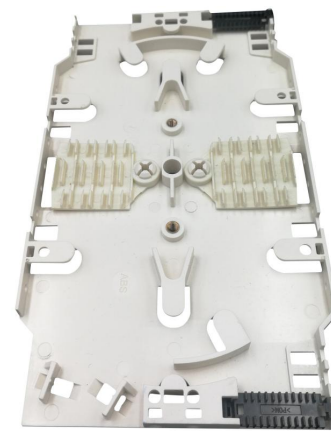


Model	SJ-BWN-FST-06
Capacity	24 Cores
Pitch of Holes	80mm
Size	175X117X17mm

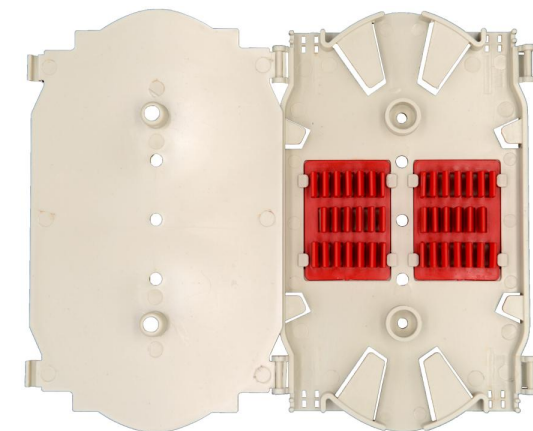
## Fiber Splice Tray Datasheet



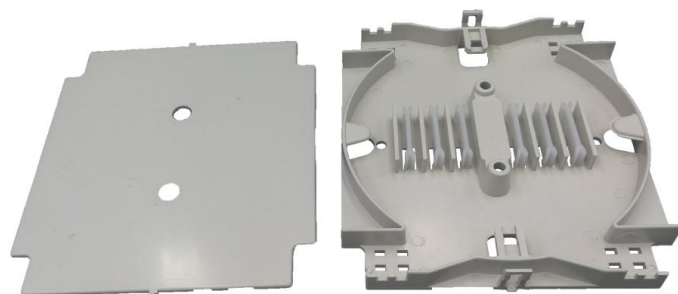
Model	SJ-BWN-FST-07
Capacity	24 Cores
Pitch of Holes	148mm
Size	218X98X20mm



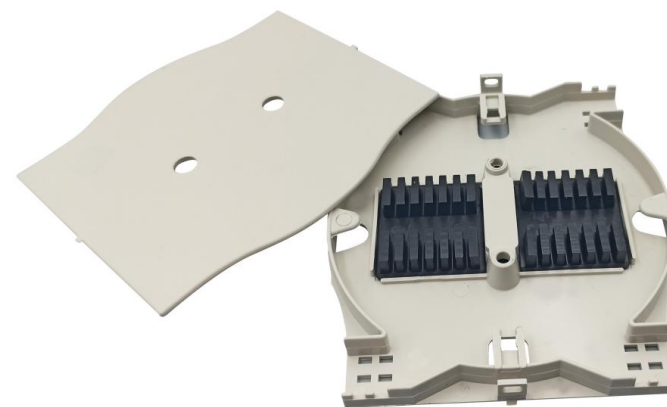
Model	SJ-BWN-FST-08
Capacity	12 Cores
Pitch of Holes	42mm
Size	155X92X8mm



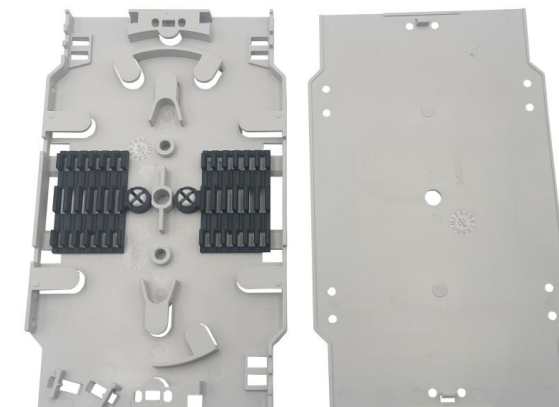
Model	SJ-BWN-FST-09
Capacity	24 Cores
Pitch of Holes	80mm
Size	163X98X15mm



Model	SJ-BWN-FST-10
Capacity	12-24 Cores
Pitch of Holes	39mm
Size	119X109X11mm

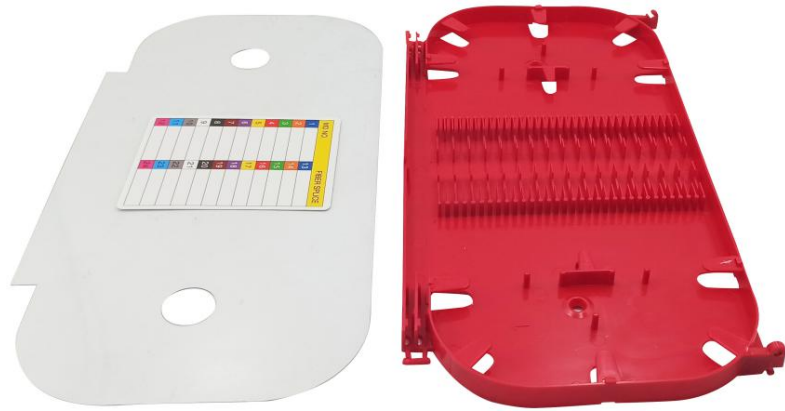


Model	SJ-BWN-FST-10-A
Capacity	12-24 Cores
Pitch of Holes	39mm
Size	119X109X11mm

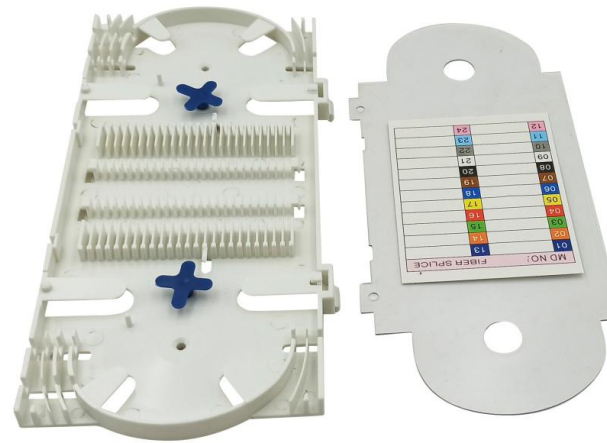


Model	SJ-BWN-FST-11
Capacity	12 Cores
Pitch of Holes	42mm
Size	154X91X10mm

## Fiber Splice Tray Datasheet



Model	SJ-BWN-FST-12
Capacity	24-64 Cores
Pitch of Holes	182mm
Size	278X143X12mm



Model	SJ-BWN-FST-13
Capacity	24 Cores
Pitch of Holes	148mm
Size	220X98X10mm