

## Fiber Wall Socket Datasheet

### » Description

The Fiber Wall Socket / Fiber Optic Face-plate employs a compact plug-in design, combines a modern design concept, adopts imported plastic, is of a graceful appearance, and applicable for FTTH, FTTO, and FTTD, etc., and allows easy use in different installation environments.

### » Features

- Small size, lightweight, use conveniently
- ABS material, fireproof and dust-proof
- Radians appearance makes it slinky
- Suitable for various modules and multimedia interfaces
- Embedded chart and logo position makes it easy to identity
- Support MM or SM fiber connection
- Very thin and matches with other A86 panels in homes and also meet the open or concealed cabling for optical cables
- Used in FTTH indoor application, home or work area
- Provide users with optical access or data access
- Suitable for SC/LC adapters
- May store surplus fiber inside, easy for operation
- A user end product to realize optical fiber to desktop solution.
- It can be used in the home or working area to accomplish double-core fiber access and port output
- Used in the end termination of residential buildings and villas, to fix and splice with pigtails

### » Application

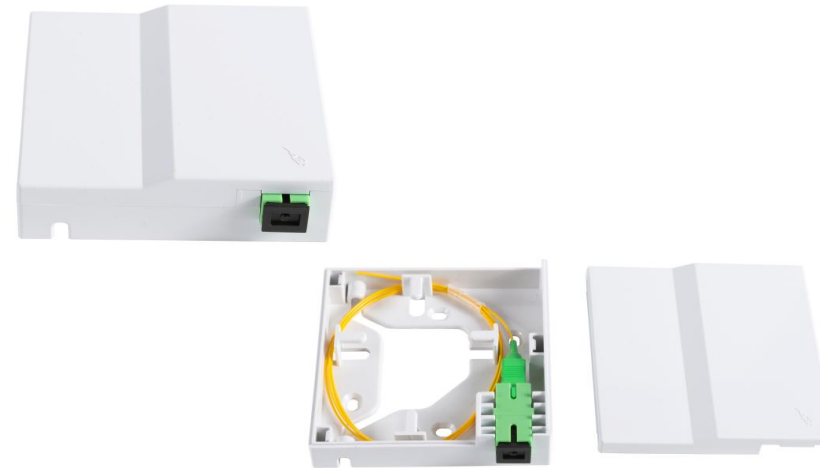
- CATV networks
- Optical fiber communication
- FTTH
- Fiber optic network convergence
- Optical fiber access network
- Widely used in FTTH access network
- Telecommunication networks
- Data communications networks
- Local area networks



## Fiber Wall Socket Datasheet



Model	SJ-FTTH-LM-1
Capacity	1/2 Core
Adapter	SC/LC
Size	120X90X25mm



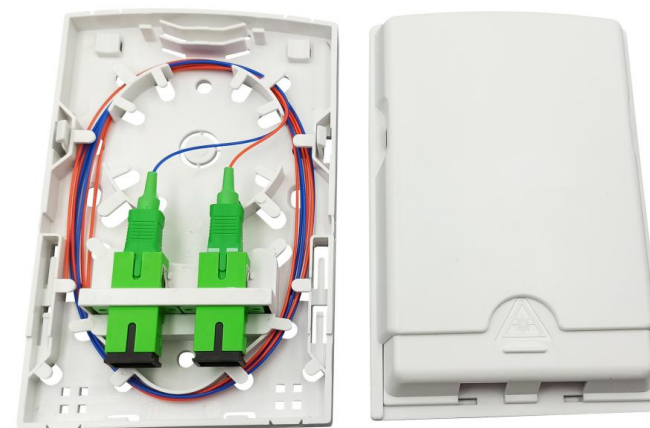
Model	SJ-FTTH-MN-5
Capacity	1/2 Core
Adapter	SC/LC
Size	86x86x20mm



Model	SJ-FTTH-LM-4
Capacity	4/8 Cores
Adapter	SC/LC
Size	150X110X30mm



Model	SJ-FTTH-LM-8
Capacity	8/16 Cores
Adapter	SC/LC
Size	205X110X30mm



Model	SJ-FTTH-SK-1
Capacity	2/4 Cores
Adapter	SC/LC
Size	130X83X25mm



Model	SJ-FTTH-SK-2Y
Capacity	1 Core
Adapter	SC
Size	150X50X25mm

## Fiber Wall Socket Datasheet



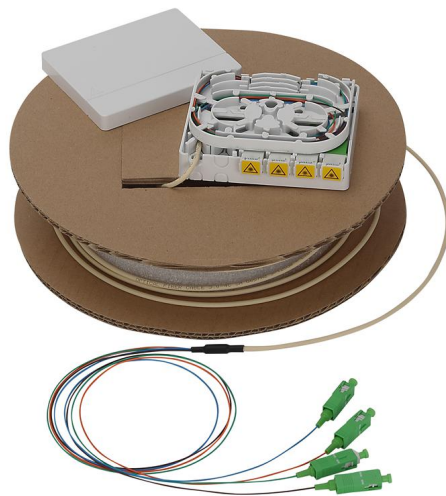
Model	SJ-FTTH-SK-5
Capacity	2 Cores
Adapter	SC/LC
Size	100X80X20mm



Model	SJ-FTTH-SK-6
Capacity	2 Cores
Adapter	SC/LC
Size	105X82X22mm



Model	SJ-FTTH-SK-7
Capacity	4 Cores
Adapter	SC/LC
Size	100X85X30mm



Model	SJ-FTTH-SK-7-PT
Capacity	4 Cores
Adapter	SC/LC
Size	255x255x60mm



Model	SJ-FTTH-SK-10
Capacity	2 Pieces drop cable/Pigtail
Adapter	SC/LC
Size	135X9X18mm



Model	SJ-FTTH-MN-1-LC-UPC
Capacity	2 Cores
Adapter	LC/UPC Duplex
Size	86X86X22mm

## Fiber Wall Socket Datasheet



Model	SJ-FTTH-MN-1-SC-APC
Capacity	2 Cores
Adapter	SC/APC Simplex
Size	86X86X22mm



Model	SJ-FTTH-MN-1-SC-UPC
Capacity	2 Cores
Adapter	SC/UPC Simplex
Size	86X86X22mm



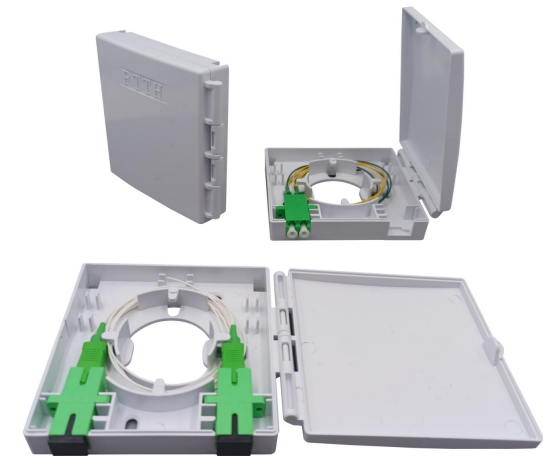
Model	SJ-FTTH-MN-2
Capacity	2 Cores
Adapter	SC/LC
Size	86X86X22mm



Model	SJ-FTTH-MN-3
Capacity	1 Core
Adapter	SC/LC
Size	95X90X15mm

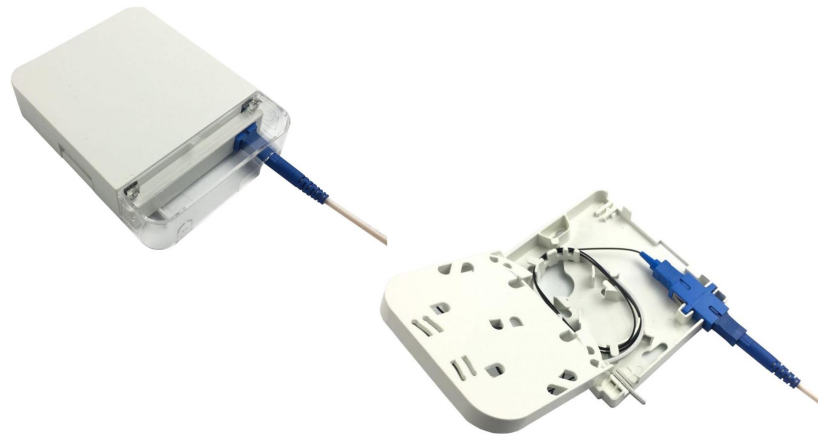


Model	SJ-FTTH-MN-4
Capacity	2 Cores
Adapter	SC/LC
Size	80X80X20mm



Model	SJ-FTTH-MN-4-2
Capacity	2 Cores
Adapter	SC/LC
Size	95x87x21mm

## Fiber Wall Socket Datasheet



Model	SJ-FTTH-SS-1
Capacity	1 Cores
Adapter	SC
Size	86×115×23mm



Model	SJ-FTTH-SS-2
Capacity	1-4 Cores
Adapter	SC/LC
Size	124X80X27mm



Model	SJ-FTTH-SS-3
Capacity	2/4 Cores
Adapter	SC/LC
Size	133×75×25mm



Model	SJ-FTTH-MN-4A
Capacity	1 Core
Adapter	SC/LC
Size	86X86mm



Model	SJ-FTTH-MN-4B
Capacity	4 Core
Adapter	SC/LC
Size	86X86mm



Model	SJ-FTTH-MN-4C
Capacity	1/2 Core
Adapter	SC/LC
Size	86X86mm

## Fiber Wall Socket Datasheet

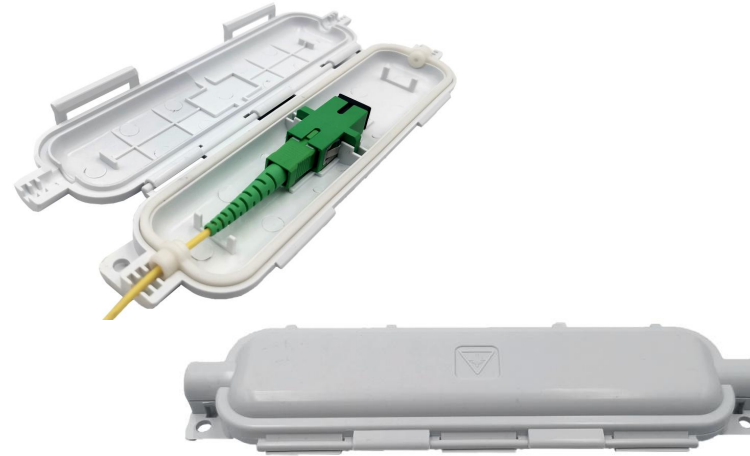


Model	SJ-FTTH-MN-4D
Capacity	1 Core
Adapter	SC/LC
Size	86X86mm

## Fiber Wall Socket Datasheet



Model	SJ-FTTH-SK-2S
Capacity	1 Core Splice tube
Adapter	No
Size	160X48X16mm



Model	SJ-FTTH-SK-2W
Capacity	1 Core
Adapter	SC
Size	160X48X16mm



Model	SJ-OTB-SY-07
Capacity	2 Cores
Adapter	No
Size	180×60x20mm



Model	SJ-FTTH-SK-2B
Capacity	1 Core
Adapter	SC
Size	160X48X16mm