

In-Line Splice Closure Datasheet

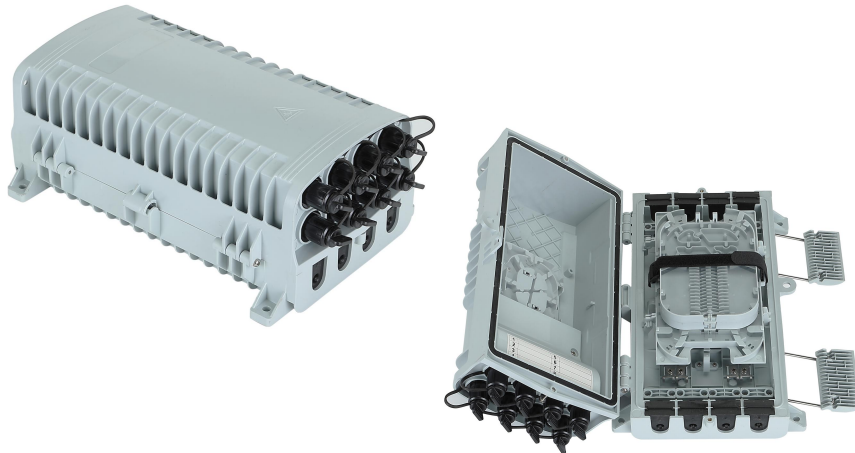
» Description

In-line (Horizontal) Fiber optic splice closure is designed to provide space and protection for the fiber optic cable splices. Fiber optic splice closure with the perfect and reliable sealed design which provides excellent protection grade, while protecting splices during pulling, compressing, and impacting, bending, tension, axial tension.

In-line fiber optic splice closure can be used repeatedly, it's easy-to-operate, and makes the installation process fast, improve the efficiency in your FTTx solutions network. Fiber optic splice closure accommodates 12-288 single fusion splice capacity. It is widely used in CATV, telecommunications, and fiber-optic networks.



In-Line Splice Closure Datasheet



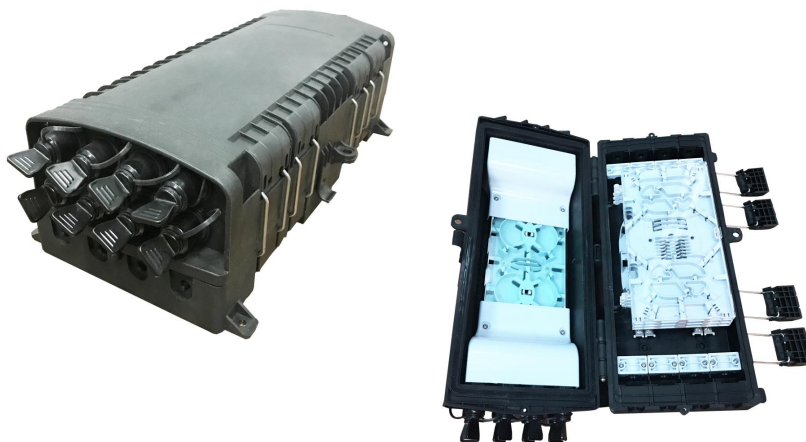
Model	MBN-FOSC-A11
Capacity	72 Cores 8 Ports SC Adapters
Cable Ports	4 In 8 Out, 12 Ports
Dimension	315x200x120mm



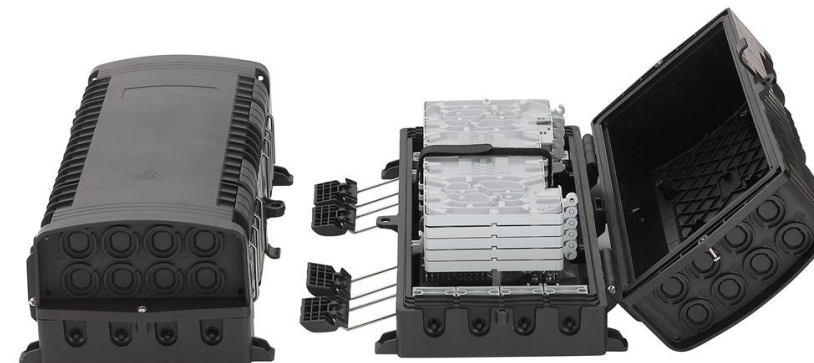
Model	MBN-FOSC-A12
Capacity	64 Cores, 18 Ports SC Adapters; 1pcs 1X16 Splitter
Cable Ports	4 In 8 Out, 12 Ports
Dimension	315x200x120mm



Model	MBN-FOSC-A13
Capacity	96 Cores
Cable Ports	4 In 4 Out, 8 Ports
Dimension	315x200x98mm



Model	MBN-FOSC-A14
Capacity	8 Cores (SC/APC) pre-connectors; 2pcs 1X8 Splitter
Cable Ports	4 In 8 Out, 12 Ports
Dimension	380x200x120mm

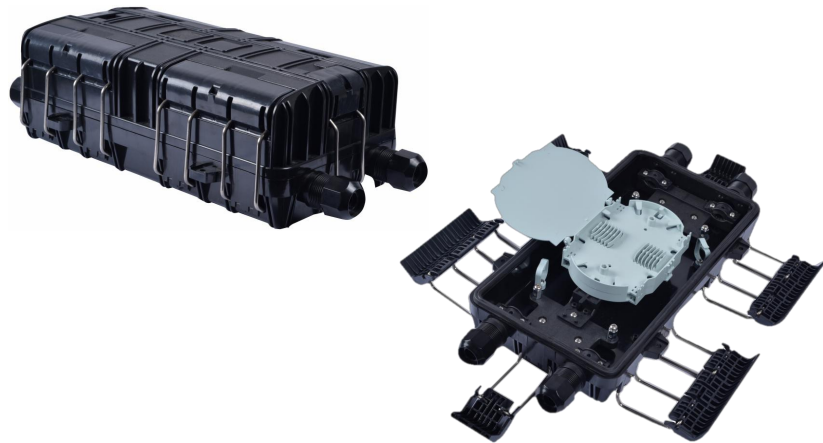


Model	MBN-FOSC-A17
Capacity	160 Cores(5x32F Tray)
Cable Ports	4 In 8 Out, 12 ports
Dimension	395X200X120mm

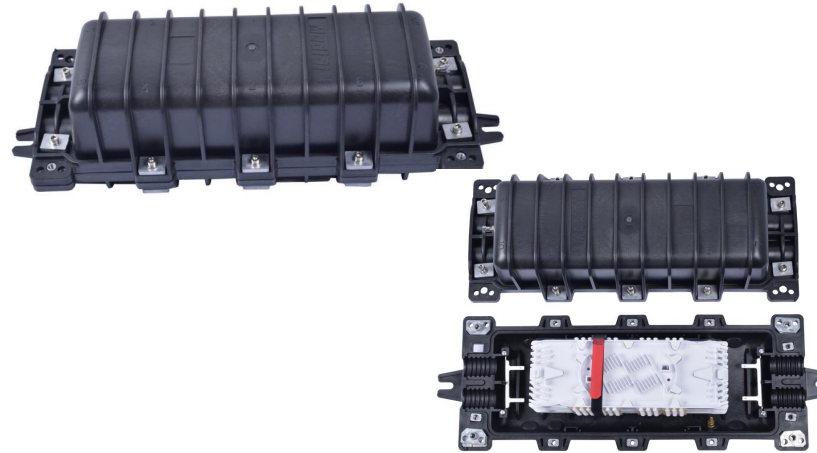


Model	MBN-FOSC-A6
Capacity	96 Cores (4 x 24F Tray)
Cable Ports	6 In 8 Out, 14 Ports
Dimension	480x155x110mm

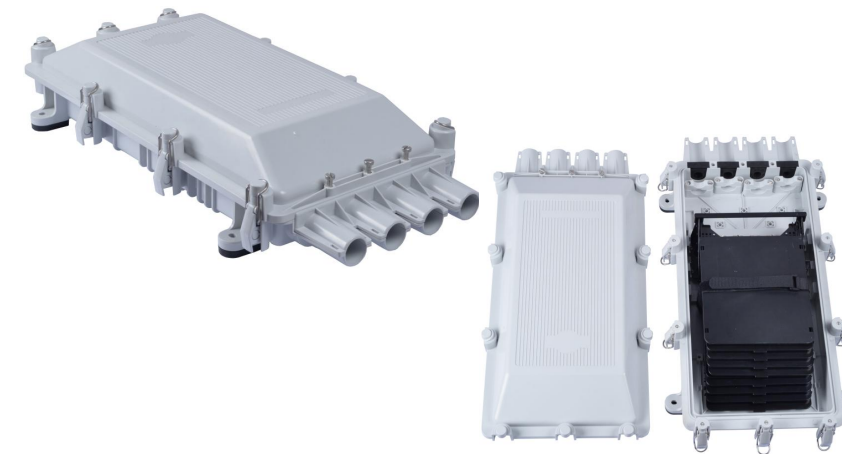
In-Line Splice Closure Datasheet



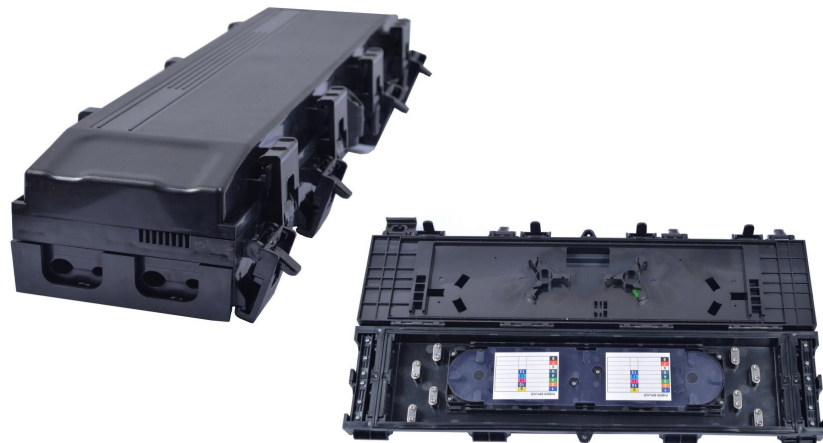
Model	MBN-FOSC-A1
Capacity	144 Cores (6 x 24F Tray)
Cable Ports	2 In 2 Out, 4 Ports
Dimension	490x230x130mm



Model	MBN-FOSC-A7
Capacity	144 Cores (6 x 24F Tray)
Cable Ports	2 In 2 Out, 4 Ports
Dimension	670x240x200mm



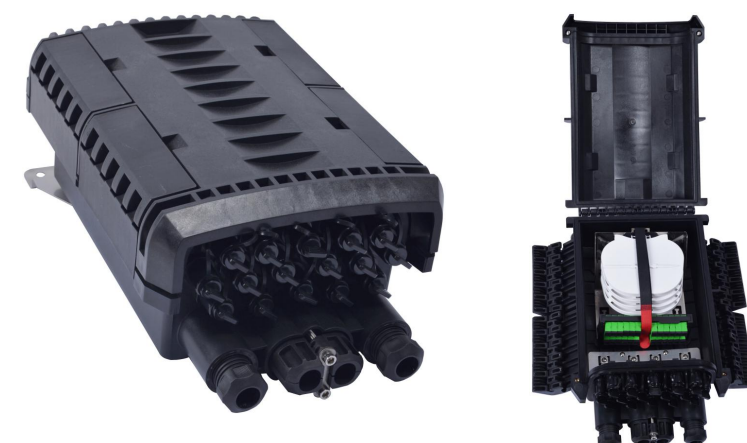
Model	MBN-FOSC-A2
Capacity	256 Cores (8 x 32F Tray)
Cable Ports	4 Ports
Dimension	555x290x106mm



Model	MBN-FOSC-A8
Capacity	Splice: 24 Cores, Adapter: 18 pcs
Cable Ports	Feeder: 4 pcs, Drop: 16 pcs
Dimension	605x190x80mm



Model	SJ-FTTH-SK-16
Capacity	SC 16 Ports; 96 Cores
Cable Ports	4 Round Ports
Dimension	385x245x130mm



Model	SJ-FTTH-SK-16-2
Capacity	SC 16 Ports; 96 Cores
Cable Ports	4 Round Ports, 16 Ports SC
Dimension	380x245x170mm

In-Line Splice Closure Datasheet



Model	SJ-FTTH-SK-24
Capacity	SC 24 Ports; 96 Cores
Cable Ports	4 Round Ports, 24 Ports SC
Dimension	385x245x130mm



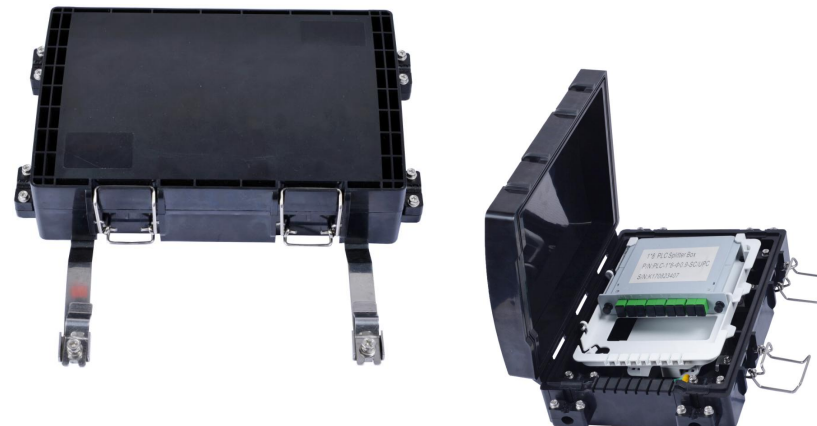
Model	SJ-FTTH-SK-17
Capacity	288 Cores
Cable Ports	8 Round Ports
Dimension	385x245x130mm



Model	GJS-24-D(PLC)
Capacity	1X32 PLC Splitter
Cable Ports	3 In 3 Out, 6 Ports
Dimension	580x255x140mm



Model	MBN-FOSC-A10
Capacity	48 Cores (4 x 12F Tray) Adapter: 8 Ports SC
Cable Ports	3 In 3 Out, 6 Ports
Dimension	300x200x80mm



Model	MBN-FOSC-A9
Capacity	Splice:12 Cores PLC Splitter: 1X8
Cable Ports	4 Ports
Dimension	305x200x75mm



Model	MBN-FOSC-A9-1
Capacity	1X8 PLC Splitter;12 Cores
Cable Ports	4 Ports
Dimension	300x200x70mm

In-Line Splice Closure Datasheet



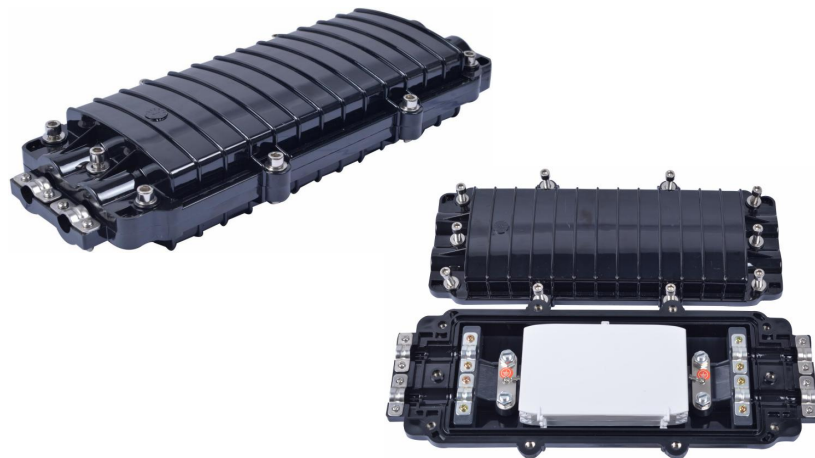
Model	MBN-FOSC-A5
Capacity	96 Cores (4 x 24F Tray)
Cable Ports	2 In 2 Out, 4 Ports
Dimension	480x155x110mm



Model	MBN-FOSC-A4
Capacity	96 Cores (4 x 24F Tray)
Cable Ports	3 In 3 Out, 6 Ports
Dimension	390x185x90mm



Model	GJS-ST24
Capacity	96 Cores (4 x 24F Tray)
Cable Ports	3 In 3 Out, 6 Ports
Dimension	440x220x11mm



Model	MBN-FOSC-A3
Capacity	96 Cores (4 x 24F Tray)
Cable Ports	2 In 2 Out, 4 Ports
Dimension	410x180x80mm

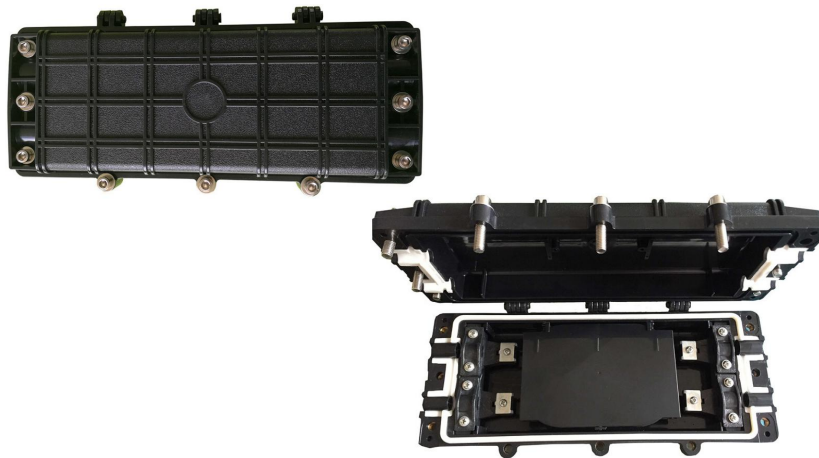


Model	SJ-Small-5
Capacity	12 Cores
Cable Ports	4 Ports
Dimension	230x200x50mm



Model	SJ-Small-4
Capacity	48 Cores (4 x 12F Tray)
Cable Ports	2 Ports
Dimension	280x200x90mm

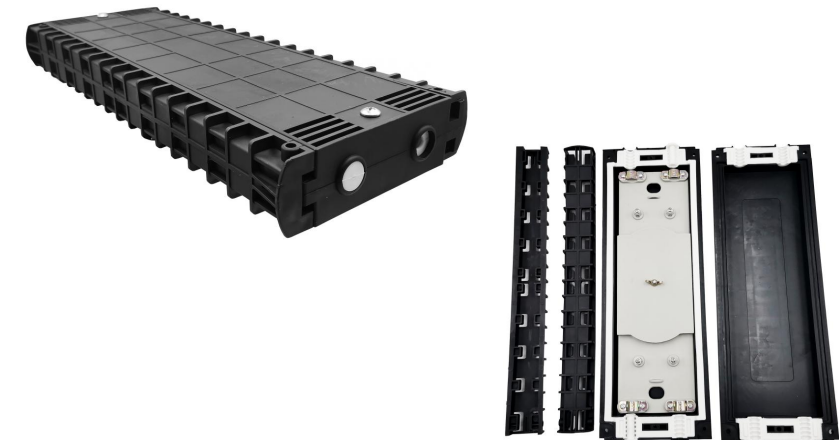
In-Line Splice Closure Datasheet



Model	SJ-Small-3
Capacity	48 Cores (4 x 12F Tray)
Cable Ports	2 In 2 Out, 4 Ports
Dimension	340x1160x70mm



Model	SJ-Small
Capacity	48 Cores (4 x 12F Tray)
Cable Ports	2 In 2 Out, 4 Ports
Dimension	230x185x85mm



Model	SJ-Small-6
Capacity	48 Cores (4 x 12F Tray)
Cable Ports	2 In 2 Out, 4 Ports
Dimension	375x146x43mm



Model	SJ-Small-7
Capacity	12 Cores
Cable Ports	2 In 2 Out, 4 Ports
Dimension	248X150X30mm

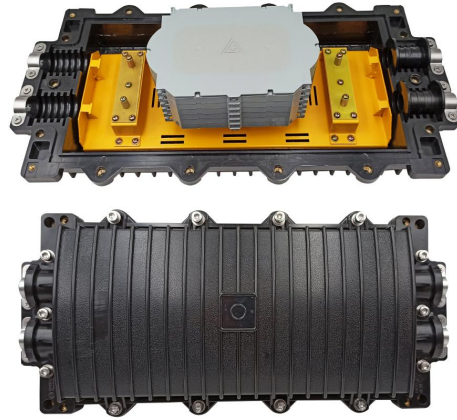


Model	GJS-ZM-24
Capacity	96 Cores (4 x 24F Tray)
Cable Ports	2 In 2 Out, 4 Ports
Dimension	485x200x105mm



Model	MBN-FOSC-A15
Capacity	24-144 Cores
Cable Ports	2 In 2 Out, 4 Ports
Dimension	480x200x120mm

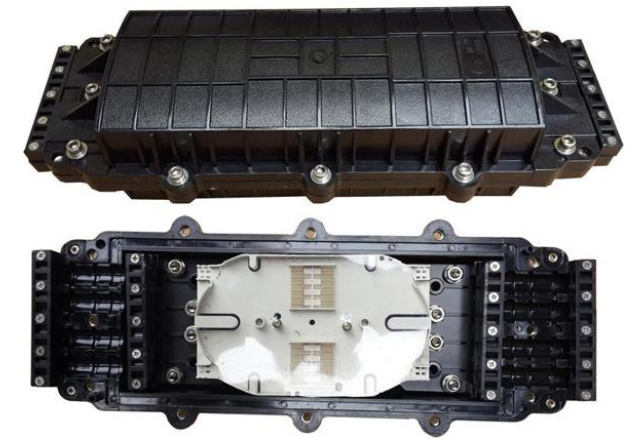
In-Line Splice Closure Datasheet



Model	MBN-FOSC-A16
Capacity	24-288 Cores
Cable Ports	2 In 2 Out, 4 Ports
Dimension	540x260x140mm



Model	SJ-ABS-02
Capacity	144 Cores (6 x 24F Tray)
Cable Ports	3 In 3 Out, 6 Ports
Dimension	465x188x120mm



Model	SJ-ABS-03
Capacity	144 Cores (6 x 24F Tray)
Cable Ports	4 In 4 Out, 8 Ports
Dimension	465x188x120mm



Model	SJ-ABS-01
Capacity	144 Cores (6 x 24F Tray)
Cable Ports	2 In 2 Out, 4 Ports
Dimension	465x188x120mm

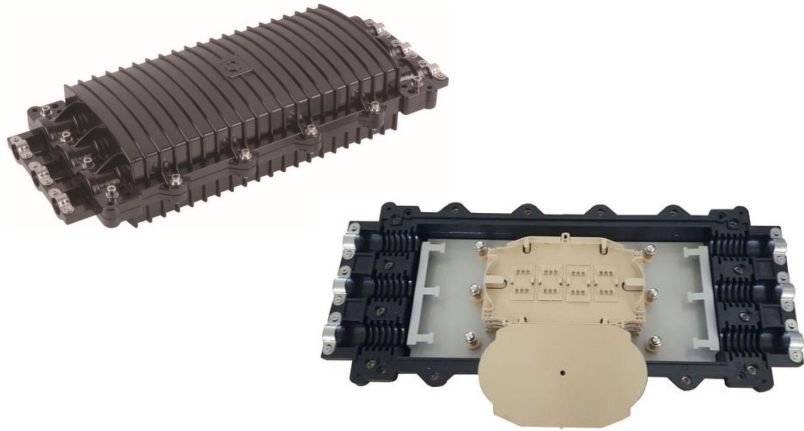


Model	SJ-New-2
Capacity	144 Cores
Cable Ports	3 In 3 Out, 6 Ports
Dimension	570x190x150mm

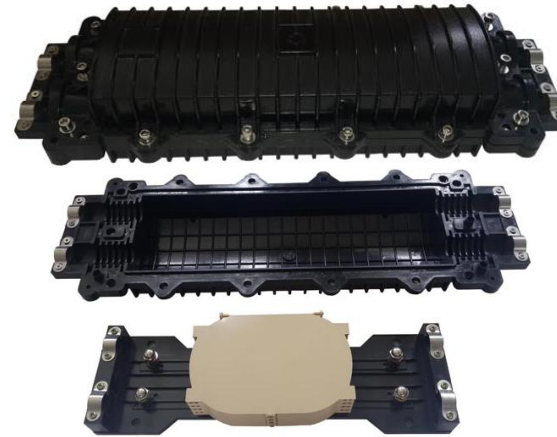


Model	SJ-New-1
Capacity	144 Cores
Cable Ports	2 In 2 Out, 4 Ports
Dimension	530x190x150mm

In-Line Splice Closure Datasheet



Model	GJS-24-D
Capacity	Bunchy 12-288 Cores; Ribbon: 576 Cores
Cable Ports	3 In 3 Out, 6 Ports
Dimension	580x255x140mm



Model	GJS-24
Capacity	144 Cores (6 x 24F Tray)
Cable Ports	2 In 2 Out, 4 Ports
Dimension	580x190x140mm

Dome Splice Closure Datasheet

» Description

Vertical (Dome) Fiber Optic Closure is designed as single-ended, O-ring sealed to provide versatile solutions for splicing feeder and distribution cables. It is suitable for protecting fiber optic cable splicing and joints in straight-through and branching applications.

Vertical Fiber Optic Closure is easily and quickly to assemble, with no special tools required in the field. It is used in underground, pole, wall mount, or aerial applications. It protect from the harmful effects of moisture, flame, insects, ultraviolet light, and excellent sealing performance against weather conditions.



Dome Splice Closure Datasheet



Model	MBN-FOSC-B2
Capacity	144 Cores (6X 24F Trays)
Cable Ports	2 In 8 Out, 10 Ports
Dimension	38x25.5x20CM (H*D)



Model	MBN-FOSC-B1
Capacity	144 Cores (6X 24F Trays)
Cable Ports	2 In 4 Out, 6 Ports
Dimension	45x23CM (H*D)



Model	MBN-FOSC-B5-1
Capacity	144 Cores (6X 24F trays)
Cable Ports	1 In 4 Out, 5 Ports
Dimension	55x15.5CM (H*D)



Model	MBN-FOSC-B5-2
Capacity	144 Cores (6X 24F Trays)
Cable Ports	1 In 4 Out, 5 Ports
Dimension	55x15.5CM (H*D)



Model	MBN-FOSC-B6-1
Capacity	144 Cores (6X 24F Trays)
Cable Ports	2 In 4 Out, 6 Ports
Dimension	55x15.5CM (H*D)



Model	MBN-FOSC-B6-2
Capacity	144 Cores (6X 24F Trays)
Cable Ports	2 In 4 Out, 6 Ports
Dimension	55x15.5CM (H*D)

Dome Splice Closure Datasheet



Model	SJ-D-4
Capacity	48 Cores (4X 12F Trays)
Cable Ports	1 In 3 Out, 4 Ports
Dimension	28.8x17.8CM (H*D)



Model	SJ-D-3
Capacity	48 Cores (4X 12F Trays)
Cable Ports	1 In 3 Out, 4 Ports
Dimension	30x17.8CM (H*D)



Model	SJ-D-2
Capacity	48 Cores (4X 12F Trays)
Cable Ports	1 In 3 Out, 4 Ports
Dimension	28.8x17.8CM (H*D)



Model	GJS-25-7-A
Capacity	288 Cores (6X 48F Trays)
Cable Ports	1 In 6 Out, 7 Ports
Dimension	55x25CM (H*D)



Model	GJS-25-7
Capacity	288 Cores (6X 48F Trays)
Cable Ports	1 In 6 Out, 7 Ports
Dimension	55x25CM (H*D)



Model	GJS-25-6
Capacity	144 Cores (6X 24F Trays)
Cable Ports	3 In 3 Out, 6 Ports
Dimension	51x22CM (H*D)

Dome Splice Closure Datasheet



Model	MBN-FOSC-B7
Capacity	288 Cores (12X 24F Trays)
Cable Ports	1 In 6 Out, 7 Ports
Dimension	51x23CM (H*D)



Model	MBN-FOSC-B4
Capacity	96 Cores(4X 24F Trays)
Cable Ports	1 In 4 Out, 5 Ports
Dimension	40x14CM (H*D)



Model	MBN-FOSC-B4-SC
Capacity	96 Cores(4X 24F Trays)
Cable Ports	1 In 4 Out, 5 Ports
Dimension	40x14CM (H*D)



Model	MBN-FOSC-B3
Capacity	72 Cores(6X 12F Trays)
Cable Ports	2 In 2 Out, 4 Ports
Dimension	40x14CM (H*D)



Model	GJS-25
Capacity	144 Cores (6X 24F Trays)
Cable Ports	1 In 4 Out, 5 Ports
Dimension	51x22CM (H*D)



Model	MBN-FOSC-B1-PLC
Capacity	24-96 Cores (4 X 24 splice tray), 18-24 port SC/LC adapters; 1X8, 1X16 mini PLC Splitter
Cable Ports	2 In 4 Out, 6 Ports
Dimension	45x23CM (H*D)